



morton.

Kingswood 206C/48-56 Derby Street

 3  2  2

Conveniently located, this stylish and spacious three-bedroom apartment has quality finishes and is ideal for those seeking a low maintenance lifestyle. Close to all the amenities needed, including being across the road from the upgraded Nepean Hospital and a short stroll to Kingswood train station. Penrith CBD and Westfield are also just a short drive away.



- Light-filled south-west facing with a large balcony and leafy outlook
- Carpeted throughout the open living/dining with split system air con
- Entertainer's eat-in gas kitchen with ample storage and bench space
- Pantry, stone island benchtop, dishwasher, cooktop & oven
- Three queen-sized bedrooms off the living all with built-in mirrored robes
- Vertical blinds to doors of the balcony/block out roller blinds to windows
- Flyscreens installed; internal laundry with dryer plus a linen cupboard

View



As advertised or by appointment

Agents

David Lipman

 0409 663 535
 david@morton.com.au

Byron Ryan

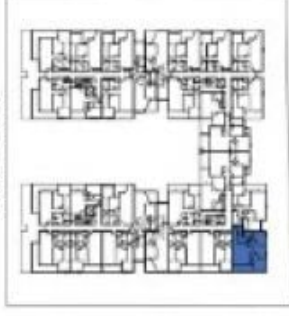
 0458 788 790
 byron.ryan@morton.com.au

morton.com.au

Unit C206

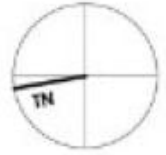


DERBY STREET



Internal = 95m²
Balcony = 12m²
Carspace = 2

Storage
-in Unit
-in Basement



Skyton Developments do not guarantee, warrant or represent that the information contained in this advertising and marketing document is correct. Any interested parties should make their own enquiries as to the accuracy of the information. We exclude all interest or implied terms, conditions and warranties arising from this document and any liability for loss or damage arising there from.

Level 2 - Unit C206

48-56 Derby Street

K I N G S W O O D