



morton.

Zetland G16/29 George Julius Avenue

 2  2  1

Sophisticated and timeless, this elegant 2 bedroom apartment features an open plan layout, impressive indoor/outdoor entertaining spaces, generous ceiling height, quality European appliances and immaculately appointed bathrooms. Every detail has been meticulously considered, making this home the epitome of high-quality living whilst enjoying a prized location.



- Open plan living that flows to covered courtyard
- Designer bedrooms with built in robes and balcony access, main with ensuite
- Contemporary kitchen with quality European appliances including gas stove
- Luxurious bathrooms plus separate Internal laundry
- Private courtyard
- Secure car space
- Storage cage

View



As advertised or by appointment

Agents

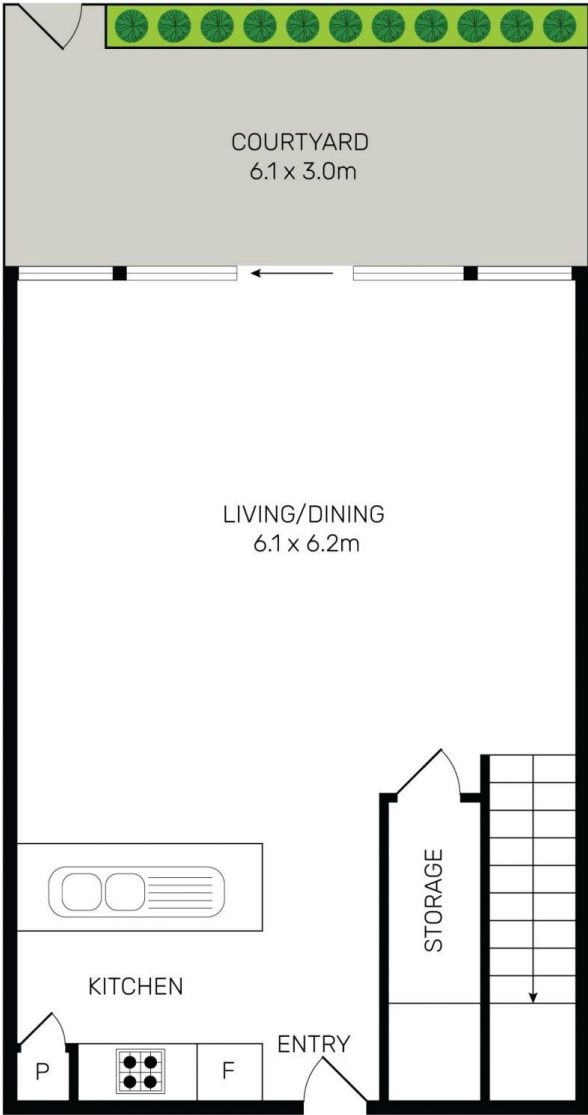
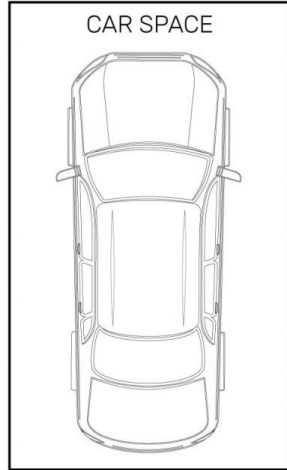
Calvin Chan

 0406 888 028
 calvin@morton.com.au

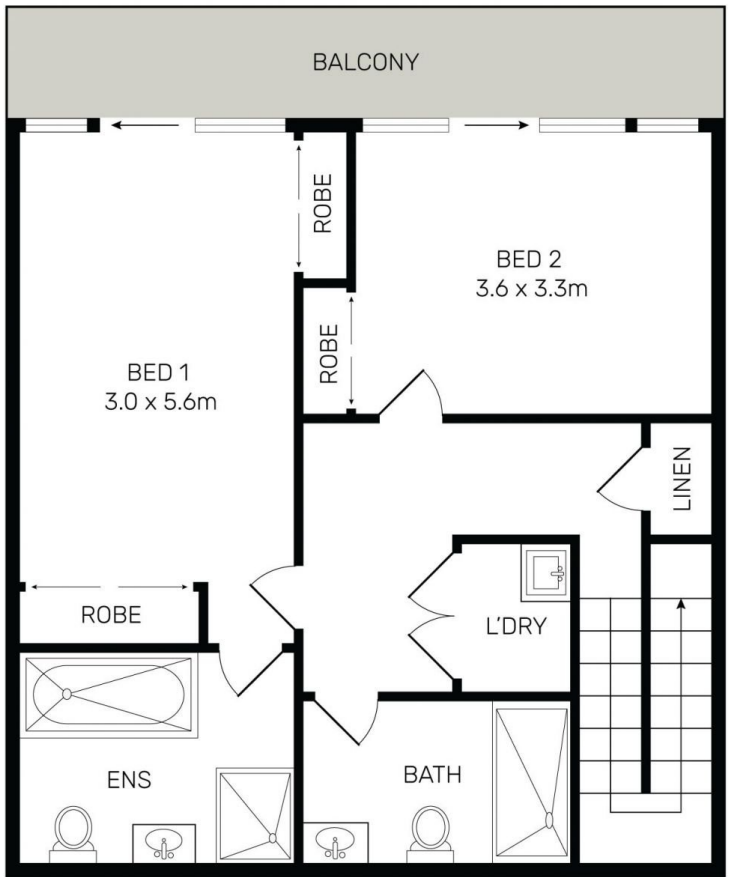
Jackson Figueiras

 0448 764 345
 jackson@morton.com.au

morton.com.au



GROUND FLOOR



FIRST FLOOR



All information contained herein is gathered from all sources we believe to be reliable. However we cannot guarantee its accuracy and interested parties should rely on their own enquiries.



G16/29 George Julius Avenue, Zetland