



morton.

Wentworth Point 318/37 Amalfi Drive

3 2 2

Discover the perfect blend of smart design and ultra-modern living in 'Sorrento', one of Wentworth Point's most sought-after security buildings that's strolling distance to the waterfront and Australia's largest urban park. This designer apartment's well-planned single-level layout offers a great low-maintenance living environment with fresh interiors, good proportions and a private balcony capturing elevated outlooks, and it's ready now for one lucky buyer to move in and enjoy.

- High-set north-east corner position with great light and airflow
- Living is fresh and open with crisp decor and quality carpeting
- A covered wraparound balcony makes a great space to entertain
- Three peaceful bedrooms include two that open onto the balcony
- Quality gas kitchen featuring stone benchtops and breakfast bar
- Main bathroom with full tub, designer ensuite and internal laundry
- Two security basement side by side car spaces

morton.com.au

Auction

Saturday, 23 Nov 2024, 12:15 pm

View

As advertised or by appointment

Agents

Dylan Choe

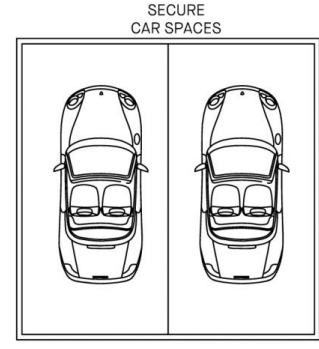
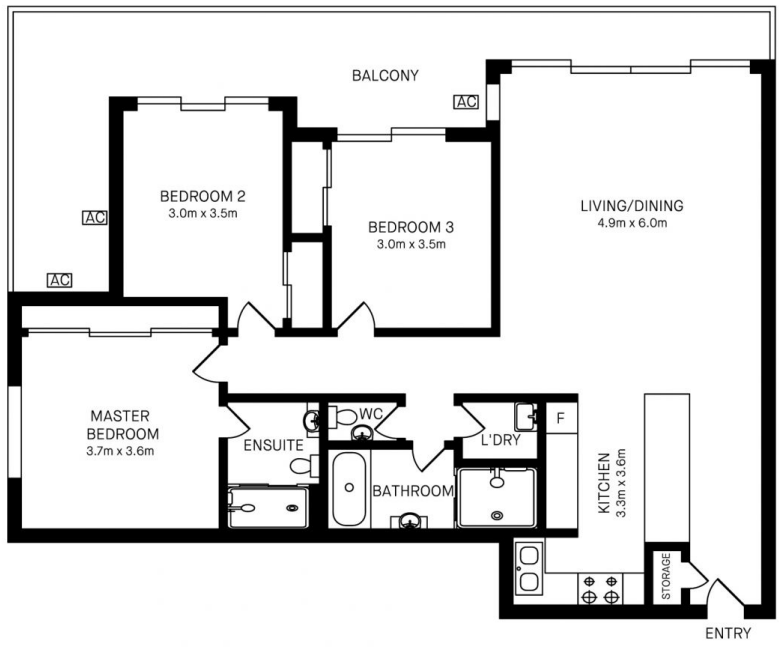
☎ 0416 932 977

✉ dylanchoe@morton.com.au

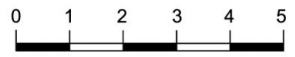
Zinmar Swe

☎ 0456 822 663

✉ zinmar.swe@morton.com.au



318/37 AMALFI DRIVE, WENTWORTH POINT



Please note these measurements are approximate only. The plans is intended as a rough guide for illustrative purpose. It is not warranted or guaranteed to be correct nor it is part of the sale or rental contract.

