



**morton.**

**Penrith** 724/1-39 Lord Sheffield Circuit

 2  2  1

Located in the hub of North Penrith, Harts Landing offers contemporary urban living in a master planned vibrant community called Thornton Estate. Only metres from Penrith train station, Westfield shopping centre and local parks.

Features Include:

- Level 7, North and South facing, Spacious lounge area
- South facing with picturesque Blue Mountains views
- North facing covered balcony lookout to common garden
- Tiled open living and dining area, efficient LED lighting throughout
- Filled with natural light from the floor to ceiling windows
- Reverse cycle air conditioning, block-out roller blinds throughout
- Stylish kitchen with stone bench-tops, soft close drawers & cupboards
- Four burner stove top with stainless steel dishwasher, microwave and oven
- NBN ready, Data/TV/PayTV points in living & bedroom
- Quality bathroom with mirrored vanity cabinet

**View**

As advertised or by appointment

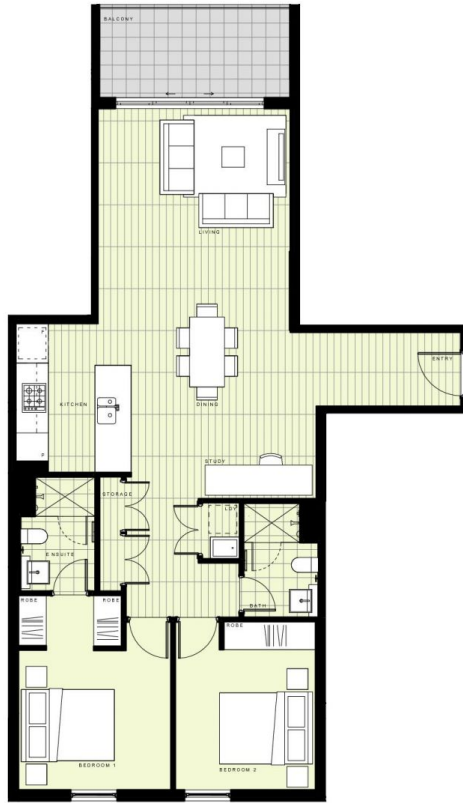
**Agent**

**Anubhav Budhathoki**

 0447 181 067

 [anubhav.budhathoki@morton.com.au](mailto:anubhav.budhathoki@morton.com.au)

**morton.com.au**



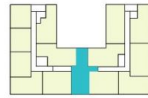
## BUILDING A

### LEVEL 7

#### APARTMENT A724 LOT 79

2 BEDROOM + STUDY

INTERNAL AREA	87m <sup>2</sup>
EXTERNAL AREA	7m <sup>2</sup>
<b>TOTAL</b>	<b>94m<sup>2</sup></b>



Disclaimer: This floor plan has been prepared for marketing purposes only. All descriptions, dimensions, depictions and other details in this floor plan may not be to scale and may vary from the property as built. Your attention is drawn to the special conditions of the contract for sale of land. No third party has any authority to make or give any representation or warranty in relation to the property unless the representation or warranty is confirmed by the vendor and included in the contract for sale of land. Revised floor plans - 14.08.18

**CALL 1300 548 588**  
**HARTSLANDING.COM.AU**  
 LORD SHEFFIELD CIRCUIT, PENRITH  
**LINK DISPLAY SUITE**  
 22 GADIGAL AVENUE, ZETLAND

PROUDLY DEVELOPED BY **PAYCE** | SALES BY **LINKK**