



**morton.**

**North Sydney** 403/26 Napier Street

 1  1  1

Nestled in a secluded laneway this spacious north facing one bedroom plus study is a short stroll to North Sydney's business and entertainment hub. Characterized by great natural light and soaring ceilings.

- Large open plan living opens to north facing balcony
- Kitchen enjoys stainless steel appliances and granite bench tops
- Master bedroom with built-in wardrobes
- Separate study area and internal storage
- Internal pool, gym, intercom and lift access
- Reverse cycle air conditioning and secure under cover parking

**View**

As advertised or by appointment

**Agent**

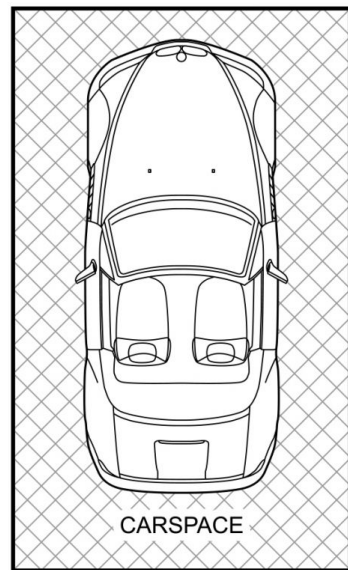
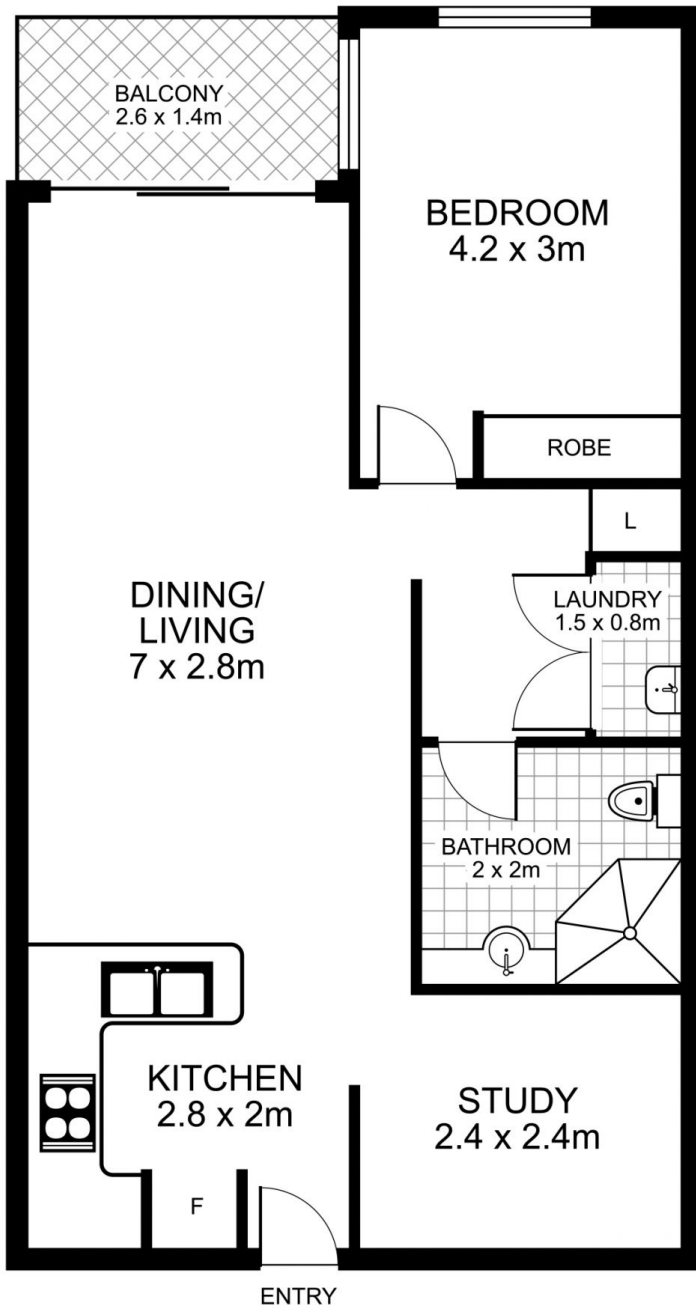
**Reza Nabavi**

 0419 283 588

 reza.nabavi@morton.com.au

**morton.com.au**

# 403/26 Napier Street, NORTH SYDNEY



an is intended as a guide only. Layout dimensions are approximate only. No representations or warranties of any nature are given or intended. Any person using this information should rely on their own enquiries

Plans by