



morton.

Woolloomooloo 549/6 Cowper Wharf Roadway

 1  1

Top level, fully furnished, loft style apartment in the Woolloomooloo Finger Wharf - one of the most unique developments in Sydney. A beautiful eastern aspect of the morning sun with views towards Potts Point and Garden Island.

- Kitchen with stone bench and gas cooktop
- Loft bedroom with ensuite
- Light filled living area with delightful water views
- Internal laundry
- Reverse cycle air conditioning
- 24 hour on-site security

View

As advertised or by appointment

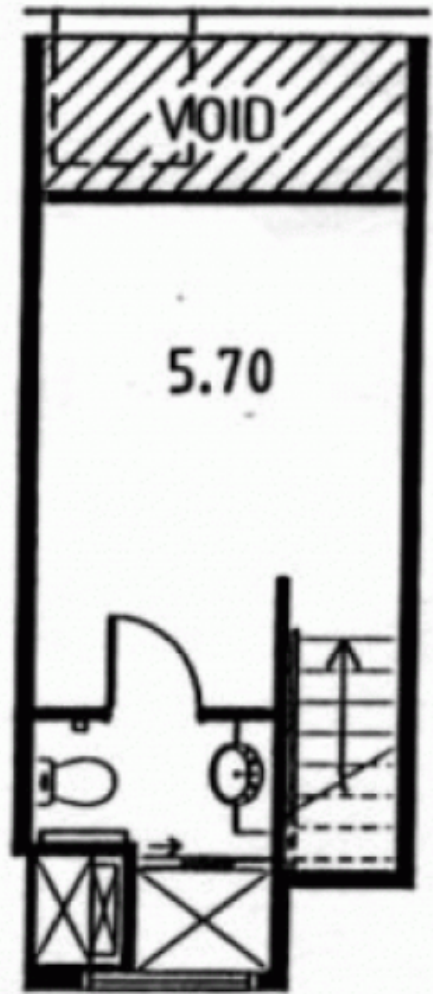
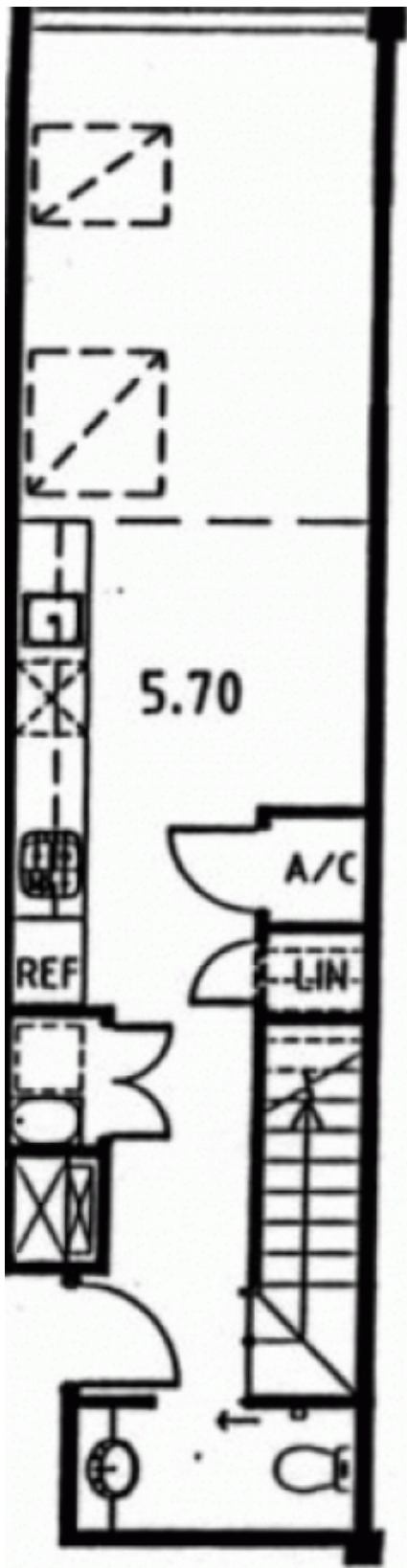
Agent

Reza Nabavi

 0419 283 588

 reza.nabavi@morton.com.au

morton.com.au



LOFT
LEVEL