



# morton.

**Zetland** 230/2 Kirby Walk

🛏 1 🚿 1 🚗 1

Discover contemporary living in one of the east's most vibrant areas. This light-filled apartment offers a stylish and comfortable lifestyle, with easy access to Victoria Park, East Village, and Green Square station

- A open lounge and dining space leading to a private courtyard.
- Double sized bedrooms with built-in wardrobe.
- Stylish Caesar Stone kitchen, stainless gas appliances.
- Designer bathroom with high-end fixtures.
- Dedicated study nook ideal for working from home or managing daily tasks.
- Study area perfect for WFH
- Secure and convenient car space.
- Additional storage cage for keeping other belongings out of the way.
- Unfurnished

### View

As advertised or by appointment

### Agents

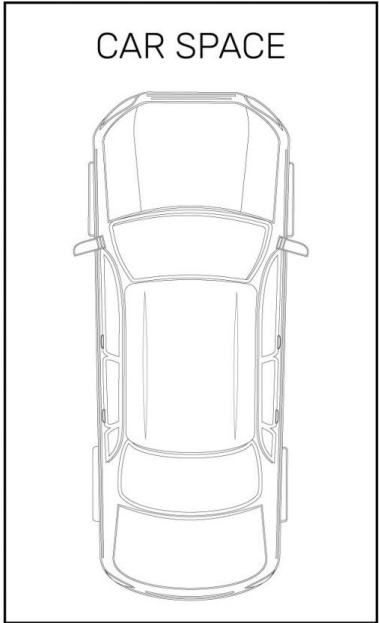
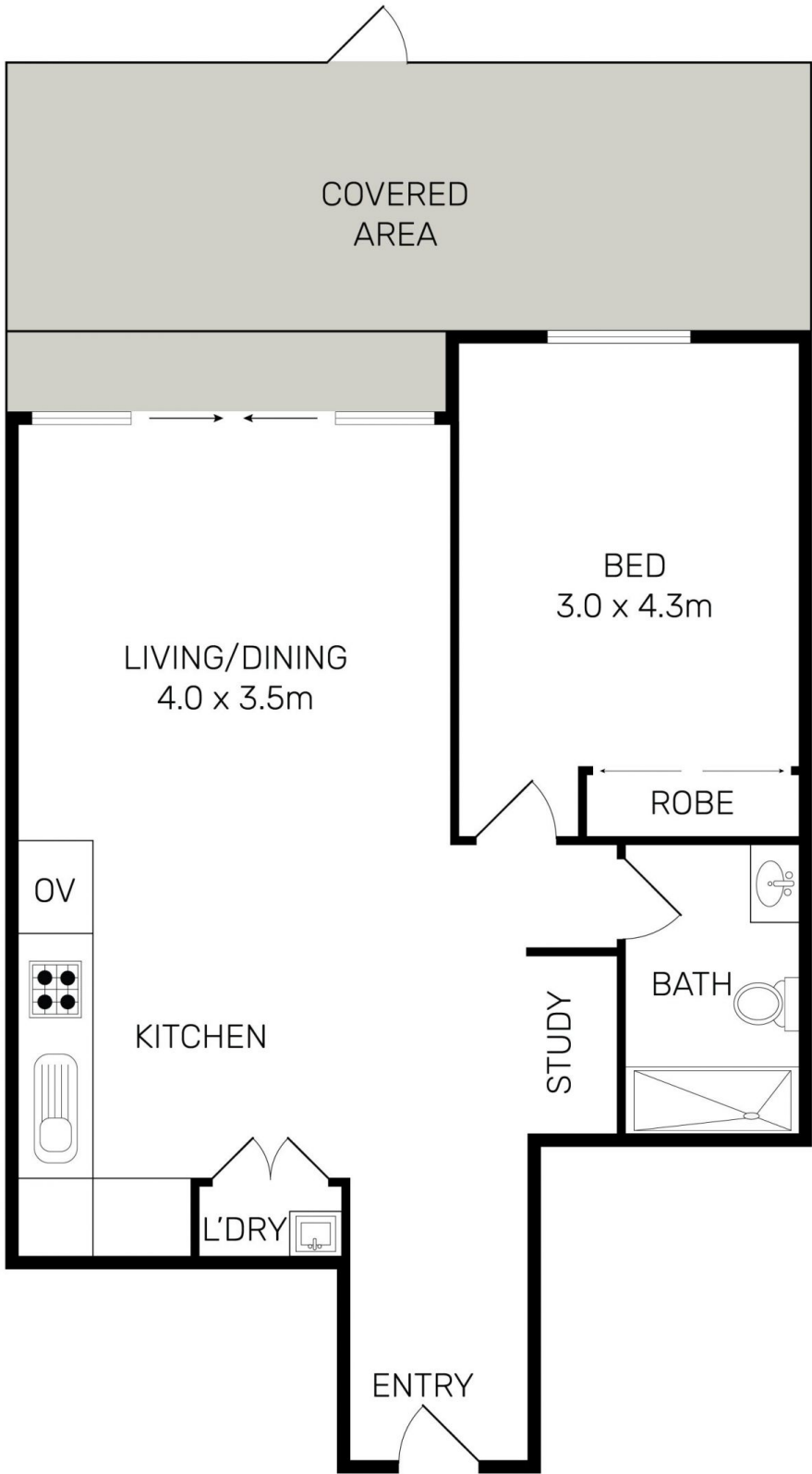
#### Alexander Karabanov

📞 0409 896 152  
✉ alexander.karabanov@morton.com.au

#### Emma Ryan

📞 0409 325 440  
✉ emmar@morton.com.au

[morton.com.au](https://morton.com.au)



All information contained herein is gathered from all sources we believe to be reliable. However we cannot guarantee its accuracy and interested parties should rely on their own enquiries.



# 230/2 Kirby Walk, Zetland