



morton.

Sydney 1802/38 York Street



Experience the epitome of urban living at York&George, an iconic residential tower designed by award-winning architects JWA. Nestled in the heart of Sydney, this stunning apartment boasts sleek engineered floors, expansive floor-to-ceiling windows, a chic designer kitchen, and premium finishes. With easy access to local amenities, it's the perfect haven for city professionals and savvy investors seeking a stress-free lifestyle.

- North and West aspect with views to the Blue Mountains
- Full-height glazing to optimize light and city views
- Private master retreat with built-in robe and balcony access
- Additional secure 1 sqm storage box
- Ducted air conditioning, video intercom, onsite management
- Sky lobby amenities, 24-hr concierge, fitness suite, 20m pool
- Common outdoor areas with BBQ facilities, dual street entry
- Footsteps to world-class dining, shopping, commercial towers
- Easy walk to Barangaroo, Circular Quay, and Chinatown

Auction

Saturday, 09 Nov 2024, 9:40 am

View

As advertised or by appointment

Agents

Ettiene West

📞 0410 593 749

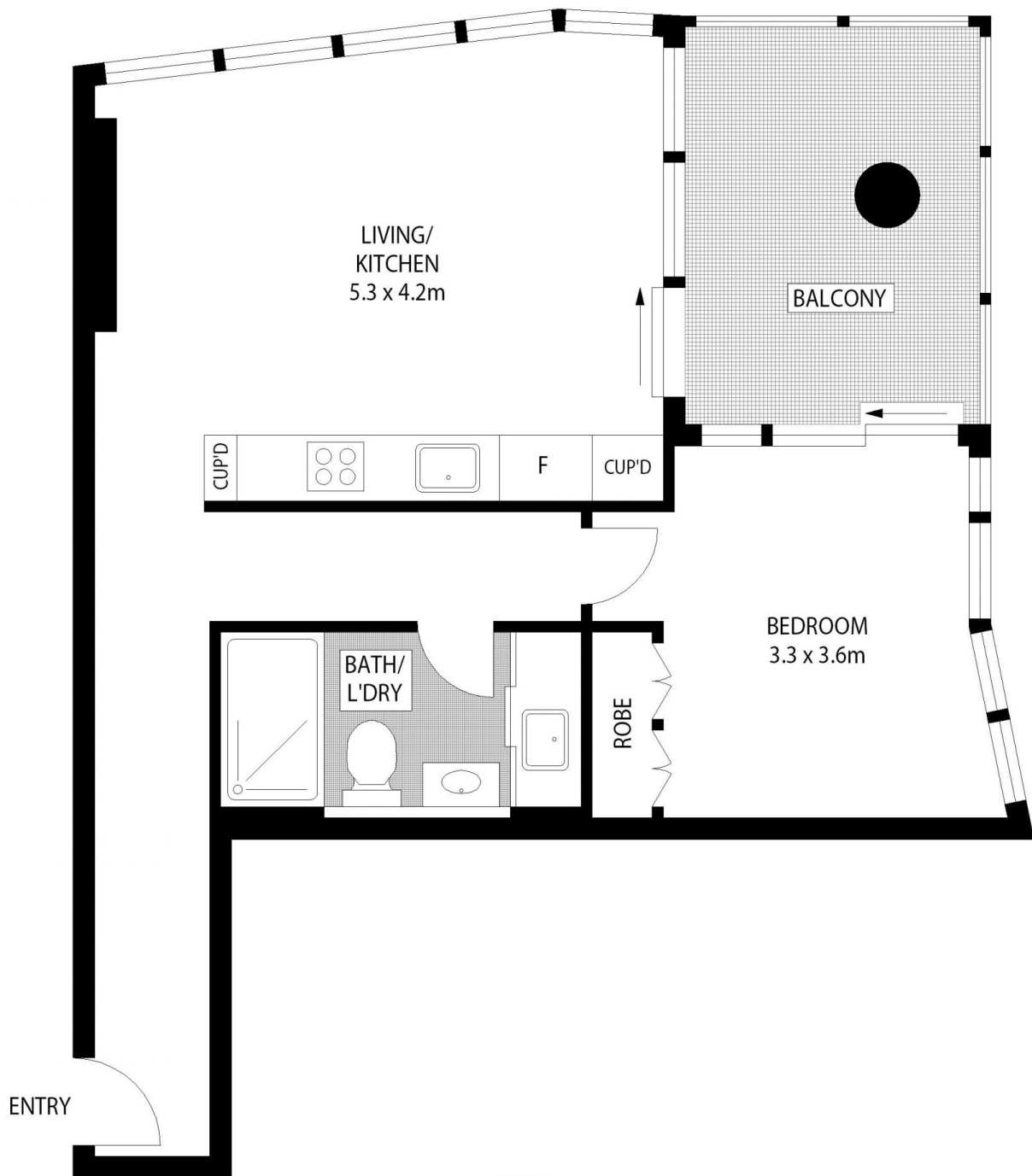
✉️ ettiene@morton.com.au

Arman Zounuzu

📞 0410 539 793

✉️ arman.zounuzu@morton.com.au

morton.com.au



LEVEL 18



1802/38 YORK STREET

SYDNEY

SCAPE Floor Planning Disclaimer: This floor plan is conceptual only. It is provided for illustrative purposes only and should not be relied upon. We make no guarantee as to the correctness of this plan. All interested parties should make and rely on their own enquiries in determining the accuracy of the information contained in this floor plan.