



morton.

Wentworth Point 110/37 Amalfi Drive

 1  1  1

The Waterfront is located moments to Sydney Olympic Park main venues, train station, Bicentennial Park and Millennium Parklands. Located in Sorrento, this is your opportunity to move into this one bedroom apartment only a short stroll from The Promenade and The Piazza.

- Split-level loft style apartment
- Open plan lounge dining area with direct balcony access
- Fully fitted kitchen with stainless steel appliances
- Bathroom with bath tub
- Internal laundry with dryer
- Split system air-conditioning unit
- Audio/visual security intercom
- Single parking with storage cage

View

As advertised or by appointment


Agents

Zarin Hossain

 0418 328 479

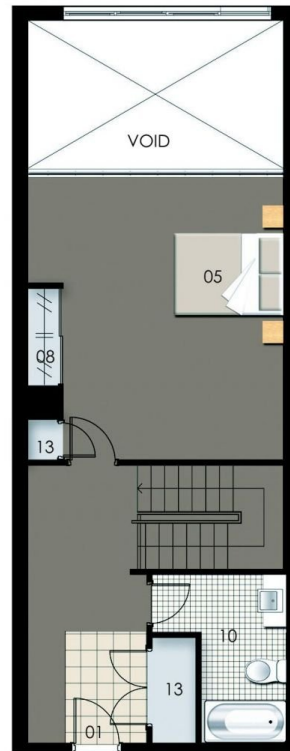
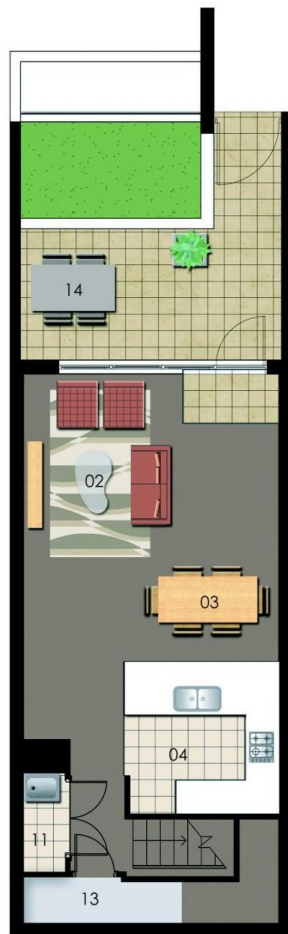
 zarin.hossain@morton.com.au

Nevena Tsahtarlis

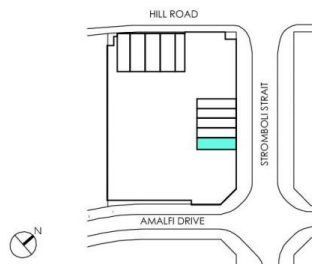
 0428 835 910

 nevena@morton.com.au

morton.com.au



ENTRY	01	WARDROBE	08
LIVING	02	ENSUITE	09
DINING	03	BATHROOM	10
KITCHEN	04	LAUNDRY	11
BEDROOM 1	05	BALCONY	12
BEDROOM 2	06	STORAGE	13
BEDROOM 3	07	COURTYARD	14



Unit 110

Lot Number	11
Type	1 Bedroom
Unit Area	93 sqm
Courtyard	22 sqm
Total	115 sqm