



morton.

Botany 303/2 Saxby Close

🛏 1 🚿 1 🚗 1

Nestled on the third floor of the prestigious "Pemberton on the park" complex, this contemporary, light-filled apartment offers a perfect blend of style and convenience. Surrounded by serene parks, charming local cafes, and a variety of shops, this residence guarantees an enviable lifestyle.

- Building has numerous playgrounds, picnic areas, and shared BBQ facilities.
- Elegant living/dining areas that seamlessly flow to an entertainer's balcony.
- Kitchen features ample storage, with stainless steel SMEG appliances.
- Also has stone countertops, and a mirrored splashback.
- Spacious bedroom with balcony access and a built-in wardrobe.
- Bathroom is generously sized with full tiling and an integrated laundry.
- Private study, ideal for working from home.
- Secure with intercom entry, basement parking, and ducted air conditioning.

morton.com.au

View

As advertised or by appointment

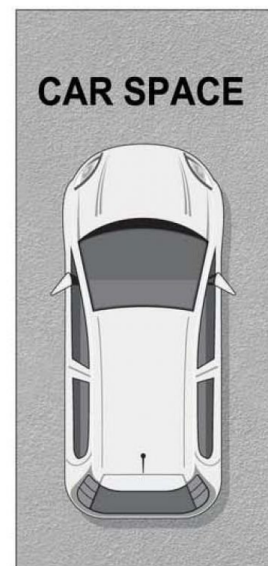
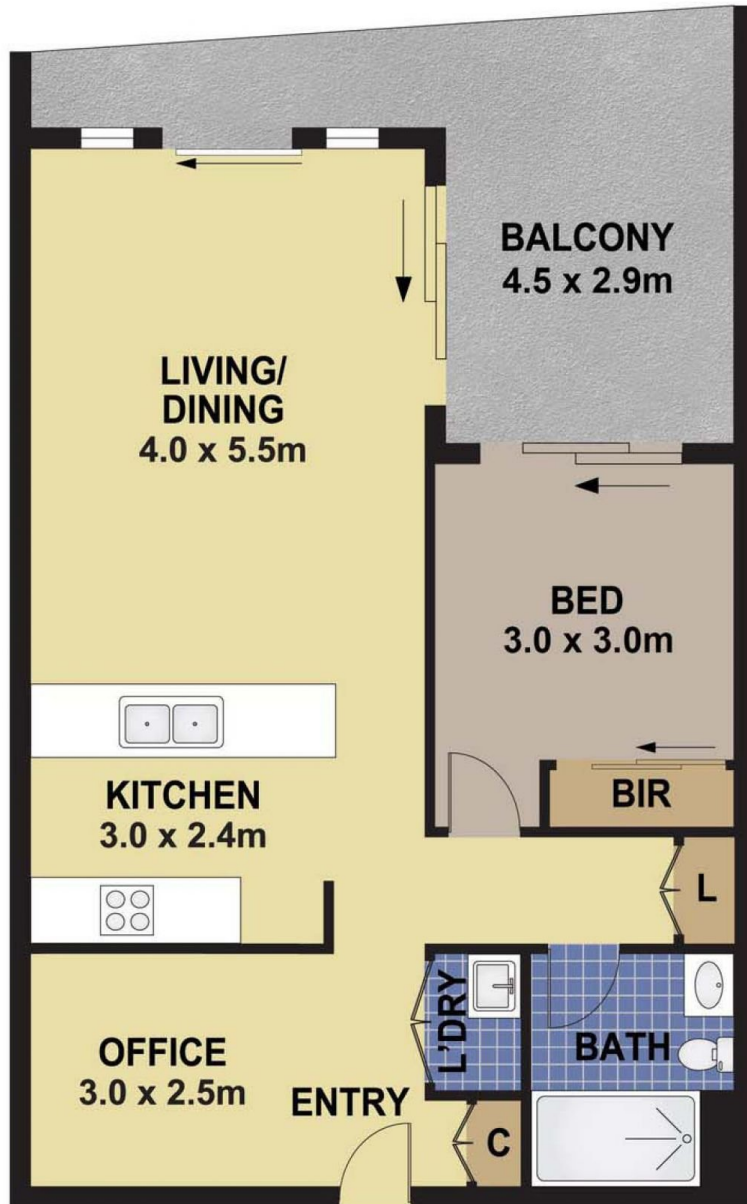
Agents

Alexander Karabanov

📞 0409 896 152
✉ alexander.karabanov@morton.com.au

Emma Ryan

📞 0409 325 440
✉ emmar@morton.com.au



303 SAXBY CLOSE, BOTANY

DISCLAIMER

PLANS SHOWN ARE FOR MARKETING PURPOSES ONLY, ALL DIMENSIONS ARE APPROXIMATE AND NOT TO SCALE. THEY ARE SUBJECT TO ERRORS AND INACCURACIES AND NO LIABILITY WILL BE ACCEPTED. INTERESTED PARTIES SHOULD MAKE THEIR OWN ENQUIRIES.