



**morton.**

**Pyrmont** E1201/24-26 Point Street

 3  2  2

An offering unmatched in outlook, position, privacy and palatial "Penthouse" living, this residence awards a lifestyle of single level luxury that's simply breathtaking. Immersed in a spectacular panorama over Sydney's iconic skyline that transforms into a dazzling kaleidoscope of colour by night. With a stunning interplay of natural light and flowing space featuring a perfectly positioned north east corner embraced by wrap around exterior terraces.

- Designed for effortless in/outdoor entertaining
- Views framed through floor to ceiling glass
- Open plan living, level access to alternate terraces
- Miele gas kitchen, ample bench and cupboard space
- Double bedrooms, master w/ built-ins and ensuite
- Side by side secure parking adjacent to lift
- Dual oversized exclusive storage on title
- Ducted air conditioning, full brick construction
- On-site building management, visitor parking
- Privately positioned on an elevated cul-de-sac
- Facilities include a 25 metre lap pool and gym

**morton.com.au**

**Auction**

Saturday, 02 Nov 2024, 11:15 am

**View**

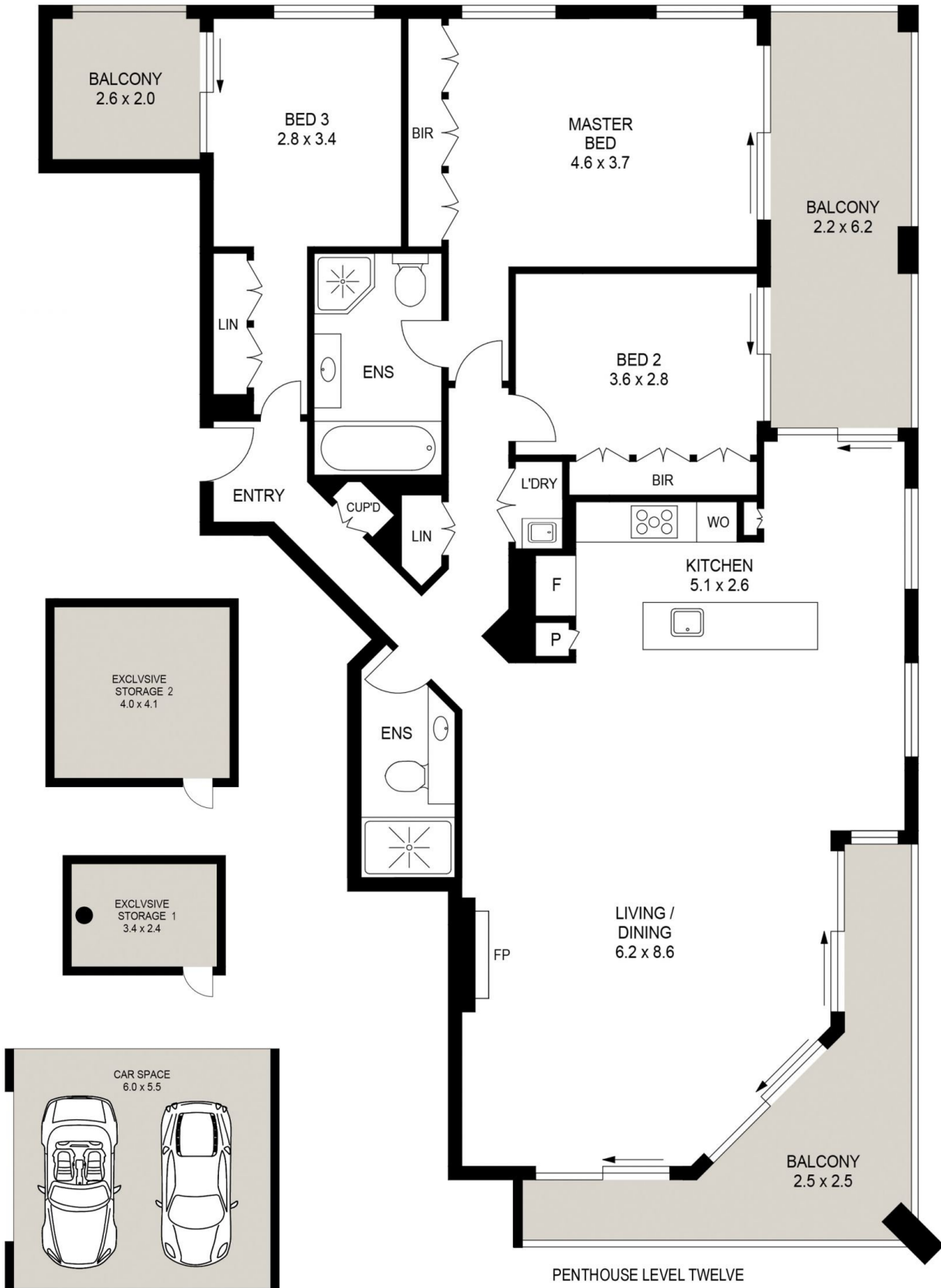
As advertised or by appointment

**Agent**

**James Crow**

 0410 593 057

 james@morton.com.au



LEVEL B1

PENTHOUSE LEVEL TWELVE

PLANS SHOWN ONLY INDICATIVE OF LAYOUT. DIMENSIONS ARE APPROXIMATE.

