



**morton.**

**Penrith** 8 Laimbeer Place

 1  1  1

Nestled in the highly sought-after Thornton Estate, this freestanding Torrens title single-level house offers the perfect blend of convenience and tranquility. Just minutes' walk to Penrith train station, Westfield, local parks, and playgrounds, this beautifully presented home features a spacious living area, a private backyard, and ducted air conditioning, all situated in a quiet cul-de-sac.

#### Key Features:

- **Quality Build:** Eden Brae constructed single-level house with a fenced backyard and side gate access.
- **Outdoor Living:** Covered alfresco area perfect for entertaining, with a low-maintenance backyard and clothesline.
- **Family-Friendly:** Plenty of safe cul-de-sac space for kids and pets to play.
- **Spacious Interiors:** Tiled open-plan living area with gas bayonet, separate lounge and dining spaces, and an additional powder room.

[morton.com.au](https://morton.com.au)

#### View

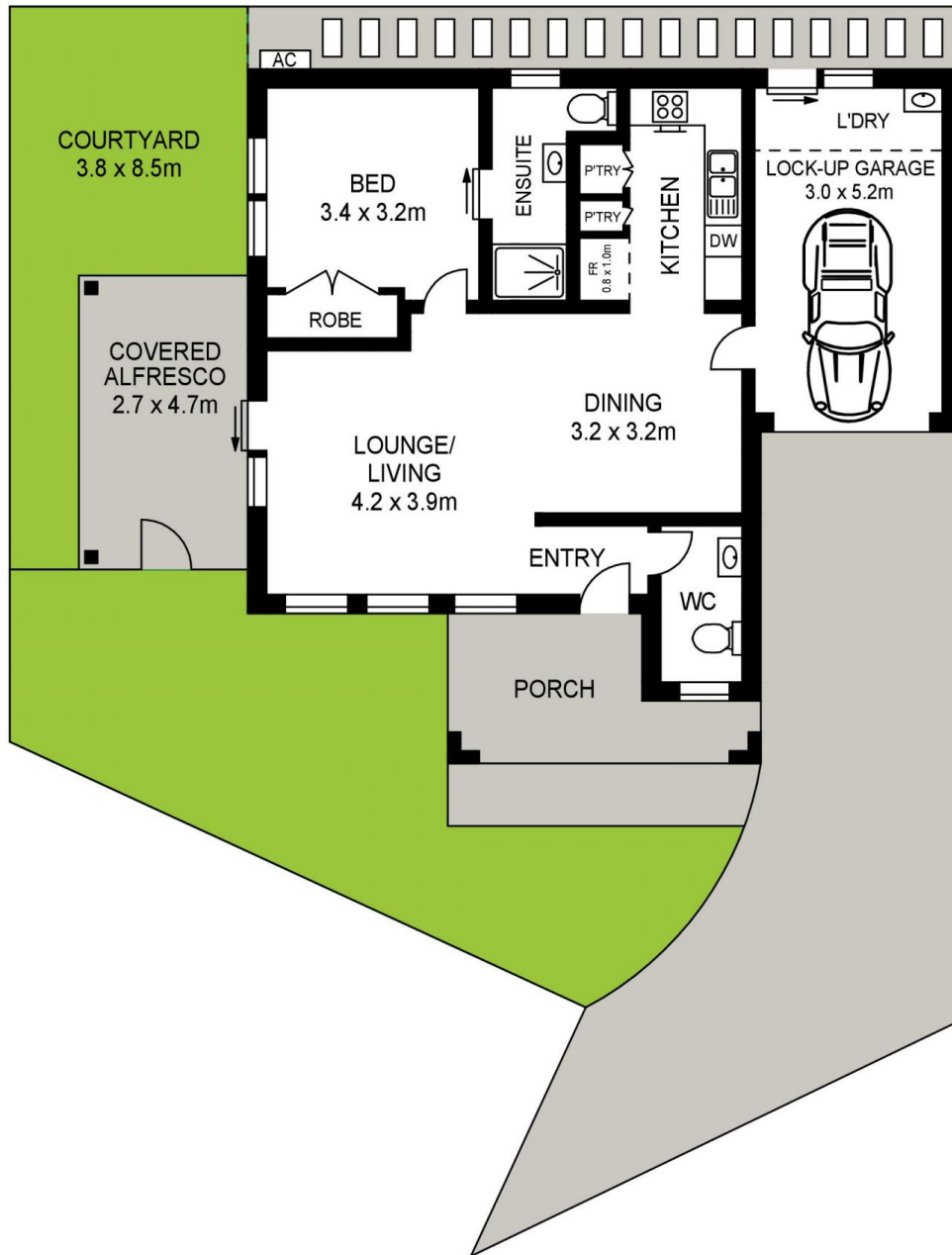
As advertised or by appointment

#### Agent

**Anubhav Budhathoki**

 0447 181 067

 [anubhav.budhathoki@morton.com.au](mailto:anubhav.budhathoki@morton.com.au)



APPROX. BUILDING AREA : 80m<sup>2</sup>  
APPROX. EXT. AREA : 151.5m<sup>2</sup>  
LAND SIZE : 231.5m<sup>2</sup>

## 8 LAIMBEER PLACE, PENRITH



[www.assetphotographers.com.au](http://www.assetphotographers.com.au)

Please note these measurements are approximate only. The plans is intended as a rough guide for illustrative purpose. It is not warranted or guaranteed to be correct nor it is part of the sale or rental contract