



morton.

Penrith 806/81B Lord Sheffield Circuit

🛏 2 🚿 2 🚗 1

This large north facing unfurnished two-bedroom plus study alcove apartment is a must see. It fills with ample natural light from floor to ceiling windows featured with scenic local and mountain's views.

- North facing with beautiful Blue Mountains views.
- Separate wool-blend carpeted bedrooms with mirrored walk-in robes, each with ensuite, reverse-cycle air-con, roller blinds and a balcony.
- Timbered open living and dining area with reverse-cycle air-con, flanked by the two bedrooms, study alcove area
- Efficient LED lighting throughout, filled with natural light from the floor to ceiling windows.
- Entertainers eat-in kitchen with stone bench-tops, soft close cupboards, four-burner stovetop with stainless steel appliances.
- NBN ready, MATV/Pay TV points in living and master bedroom.
- Quality bathrooms with mirrored vanity cabinet, large internal laundry with dryer.

View

As advertised or by appointment

Agent

Raymond Huynh

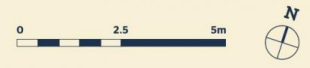
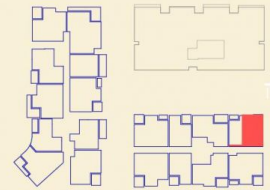
📞 0436 113 121

✉ zetlandleasing@morton.com.au

morton.com.au

Apartment

2 BED- B 806



Internal	76 m ²
External	8 m ²
Total	84 m²

DATE ISSUED 27/07/2015
VERSION 02

Developed by St Hilliers FIRST POINT PROJECTS | Sales by LINK Home Land Direct thorntoncentral.com.au

Disclaimer: This floor plan has been prepared for marketing purposes only. All descriptions, dimensions, depictions and other details in this floor plan together, the "Information" may not be to scale. The vendor reserves the right to vary or amend the Information without notice. The Information may vary from the actual dimensions, layout and characteristics of the property as built. No third party has any authority whatsoever, either expressly or impliedly, to make or give any representation or warranty or to bind the vendor in connection with the information or the property.

THORNTON