



# morton.

**Surry Hills** 1303/20 Pelican Street

 2  2  2

Step into a world of sophistication and breathtaking views at The Monument, the jewel of inner Sydney's most coveted neighbourhoods. This stunning flow-through apartment, perched high on Level 14, invites you to indulge in a luxury lifestyle, offering panoramic vistas of the sparkling harbour, dynamic city skyline, and lush parklands. Here, every moment feels like a postcard, blending urban excitement with serene beauty.

- Elegantly interconnected areas set the stage for memorable gatherings
- Full-length balconies on North and South offer breathtaking views from sunrise to sunset
- A state-of-the-art kitchen features high-end finishes and top-tier appliances
- Spacious master suite with a generous walk-in wardrobe and a lavish ensuite
- Timber flooring, soaring ceilings, and floor-to-ceiling windows with electric blinds
- A well-designed European laundry includes ample storage

[morton.com.au](https://morton.com.au)

## Auction

Saturday, 26 Oct 2024, 10:30 am

## View

As advertised or by appointment

## Agents

### Ettiene West

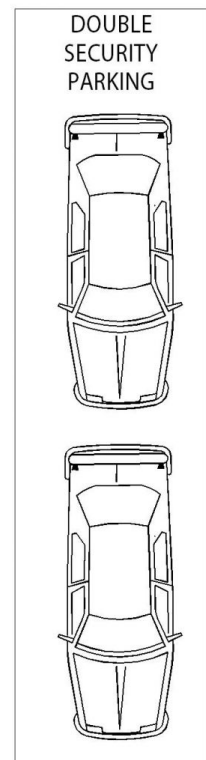
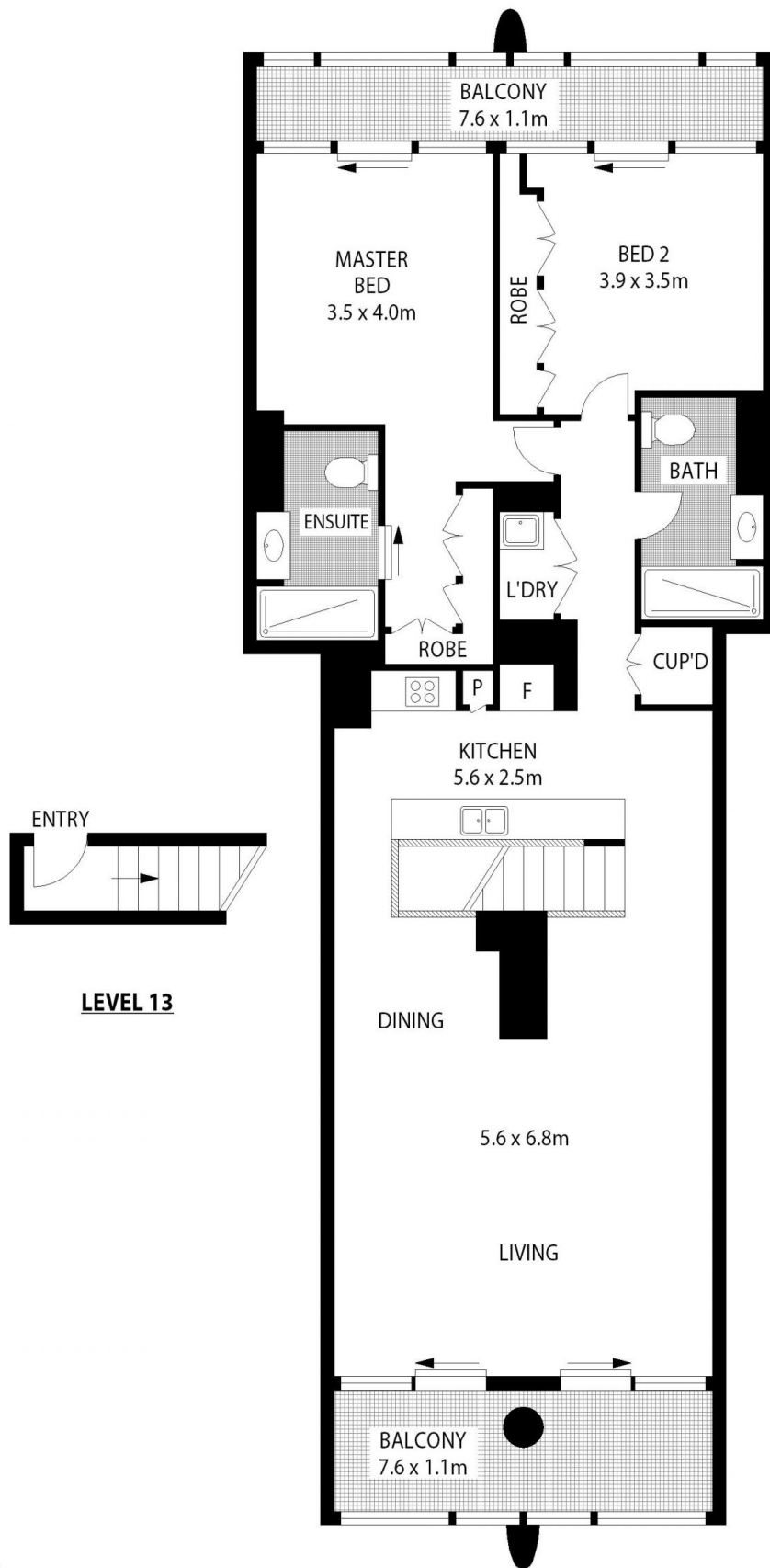
 0410 593 749

 [ettiene@morton.com.au](mailto:ettiene@morton.com.au)

### Arman Zounuzu

 0410 539 793

 [arman.zounuzu@morton.com.au](mailto:arman.zounuzu@morton.com.au)



1303/20 PELICAN STREET

SYDNEY

SCAPE Floor Planning Disclaimer: This floor plan is conceptual only. It is provided for illustrative purposes only and should not be relied upon. We make no guarantee as to the correctness of this plan. All interested parties should make and rely on their own enquiries in determining the accuracy of the information contained in this floor plan.