



morton.

Wentworth Point 518/37 Amalfi Drive

 3  2  2

Discover the perfect blend of smart design and ultra-modern living in 'Sorrento', one of Wentworth Point's most sought-after security buildings that's strolling distance to the waterfront and Australia's largest urban park. This designer apartment's well-planned single-level layout offers a great low-maintenance living environment with fresh interiors, good proportions and a private balcony capturing elevated outlooks, and it's ready now for one lucky buyer to move in and enjoy.

High-set north-east corner position with great light and airflow
Living is fresh and open with crisp decor and quality carpeting
A covered wraparound balcony makes a great space to entertain

Three peaceful bedrooms include two that open onto the balcony

Quality gas kitchen featuring stone benchtops and breakfast bar

Main bathroom with full tub, designer ensuite and internal laundry

Two security basement car spaces, each with lock-up storage

morton.com.au

Auction

Saturday, 12 Oct 2024, 11:30 am

View

As advertised or by appointment


Agents

Dylan Choe

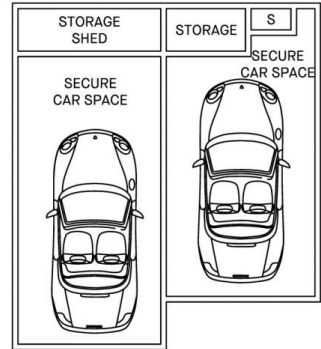
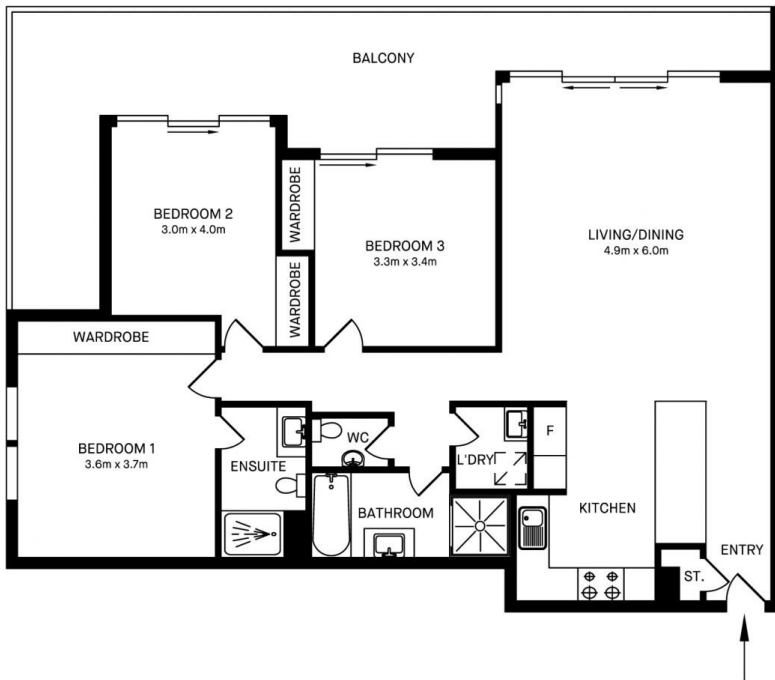
 0416 932 977

 dylanchoe@morton.com.au

Zinmar Swe

 0456 822 663

 zinmar.swe@morton.com.au



518/37 AMALFI DRIVE, WENTWORTH POINT



Please note these measurements are approximate only. The plans is intended as a rough guide for illustrative purpose. It is not warranted or guaranteed to be correct nor it is part of the sale or rental contract.

