



**morton.**

**Zetland** 215/5 O'dea Avenue

 2  2  1

Situated in the heart of the immensely popular Zetland community, this deluxe two-bedroom apartment offers a generous floor plan and embodies contemporary living with great convenience to local amenities. Conveniently located near the East Village shopping center, trendy cafes, restaurants, and Green Square Train Station, this home combines comfort with luxurious design.

- Spacious light filled living/dining areas flowing on to large entertainers balcony
- Sleek modern kitchen with European appliances
- Two generous bedrooms with built-in robes, main with ensuite
- Luxurious heated rooftop pool (exclusive access to Building 1 only), lap pool and Balinese-styled pool with heated jacuzzi.
- Secure car space
- Sought after complex designed by boutique luxury architects Stanistic Architects
- Walking distance to Green Square train station & East Village shopping centre

**morton.com.au**

#### **View**



As advertised or by appointment

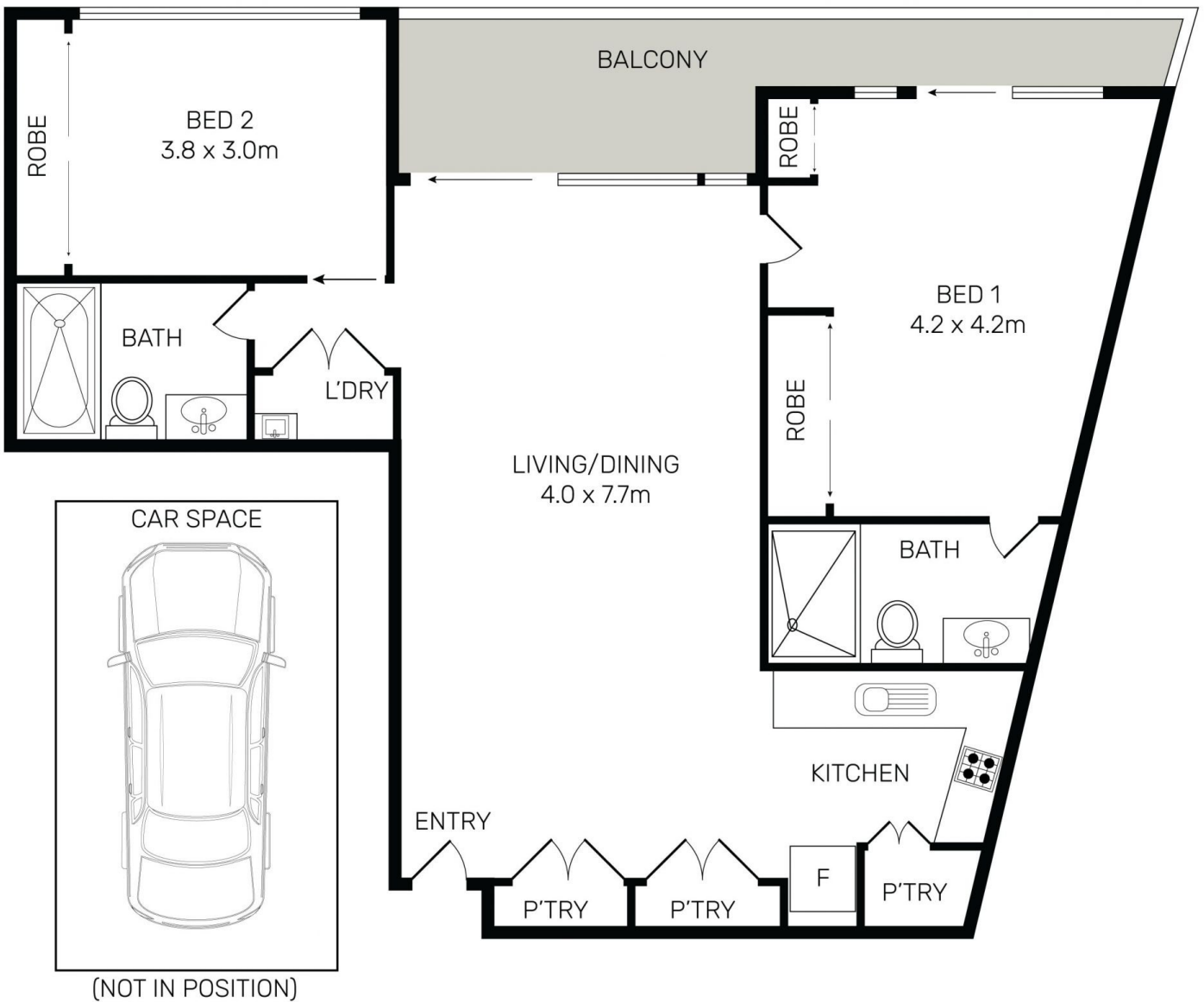
#### **Agents**

##### **Calvin Chan**

 0406 888 028  
 calvin@morton.com.au

##### **Jackson Figueiras**

 0448 764 345  
 jackson@morton.com.au



All information contained herein is gathered from all sources we believe to be reliable. However we cannot guarantee its accuracy and interested parties should rely on their own enquiries.



**215/5 o'dea Avenue, Zetland**