



morton.

Kingswood 5/21-25 Orth Street

 2  1  2

Boasting park views, modern finishes, and incredible growth potential, this impressive townhome offers the perfect blend of style and convenience.

Key Features:

- Bright, open-plan living area seamlessly flowing to private courtyards with easy-care gardens
- Sleek kitchen featuring stone benchtops, glass splashbacks, an electric cooktop and oven, a dishwasher, and abundant storage
- Two spacious bedrooms with built-in wardrobes and large windows, bathing the rooms in natural light
- Modern bathroom with a relaxing bathtub and generous vanity storage
- Split system air conditioning in both the living area and bedrooms for year-round comfort
- Secure underground parking with side-by-side spaces and internal access for added convenience
- A short walk to Kingswood train station, Nepean Hospital,

morton.com.au

View

As advertised or by appointment

Agents

Jamie Bae

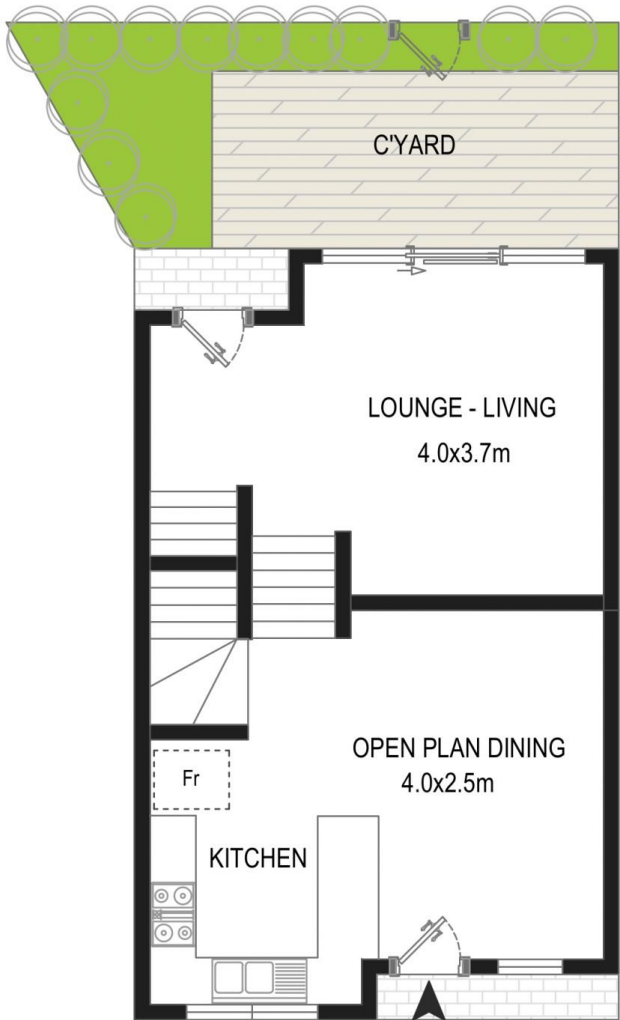
 0409 968 604

 jamie.bae@morton.com.au

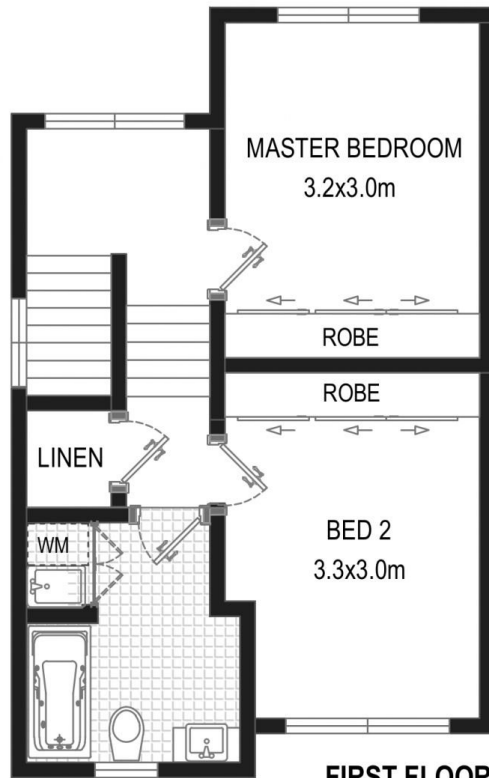
Georgia Sanders

 0487 056 578

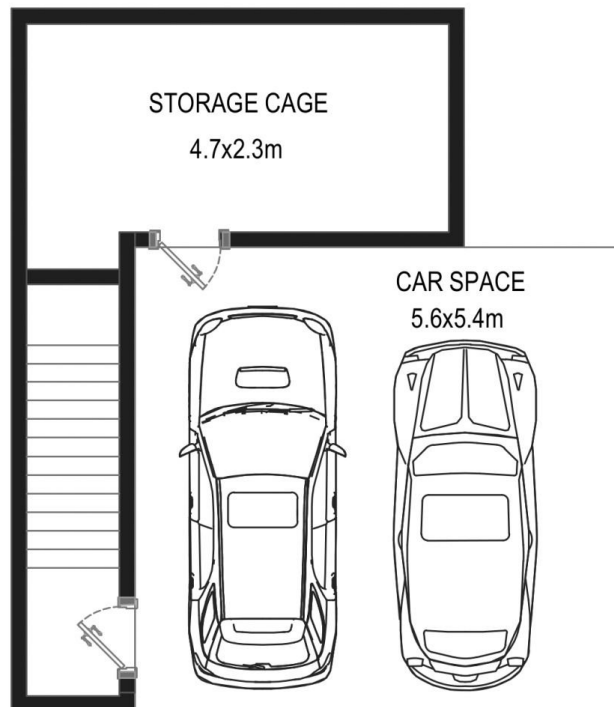
 georgia.sanders@morton.com.au



GROUND FLOOR



FIRST FLOOR



BASEMENT

5/21-25 ORTH STREET, KINGSWOOD



www.assetphotographers.com.au



Please note these measurements are approximate only. The plans are intended as a rough guide for illustrative purpose. It is not warranted or guaranteed to be correct nor it is part of the sale or rental contract.