



morton.

Sydney 156/336-346 Sussex Street

 2  1  1

Located in "Windsor Plaza" on the top level of a rare brick high-rise in the CBD, this elevated East-facing apartment combines a modern open plan layout filled with natural light. It features open living/dining areas, a spacious modern kitchen, and two good-sized bedrooms with built-in wardrobes.

- East-facing apartment on the 15th floor with an urban outlook
- Open-plan living and dining with access to a large balcony
- Generous size kitchen, stainless steel appliances
- Separate Internal laundry, wood flooring, air-conditioning
- Spacious bedrooms include built-ins, access to balcony
- Modern bathroom features combined bath and shower
- Facilities include pool, BBQ area, 24h on-site security
- Secure underground parking, onsite building manager
- Prized opportunity for astute investors or first-home buyers
- Prime location close to public transport, shops, restaurants

Auction

Tuesday, 24 Sep 2024, 6:00 pm

View

As advertised or by appointment

Agents

Ettiene West

 0410 593 749

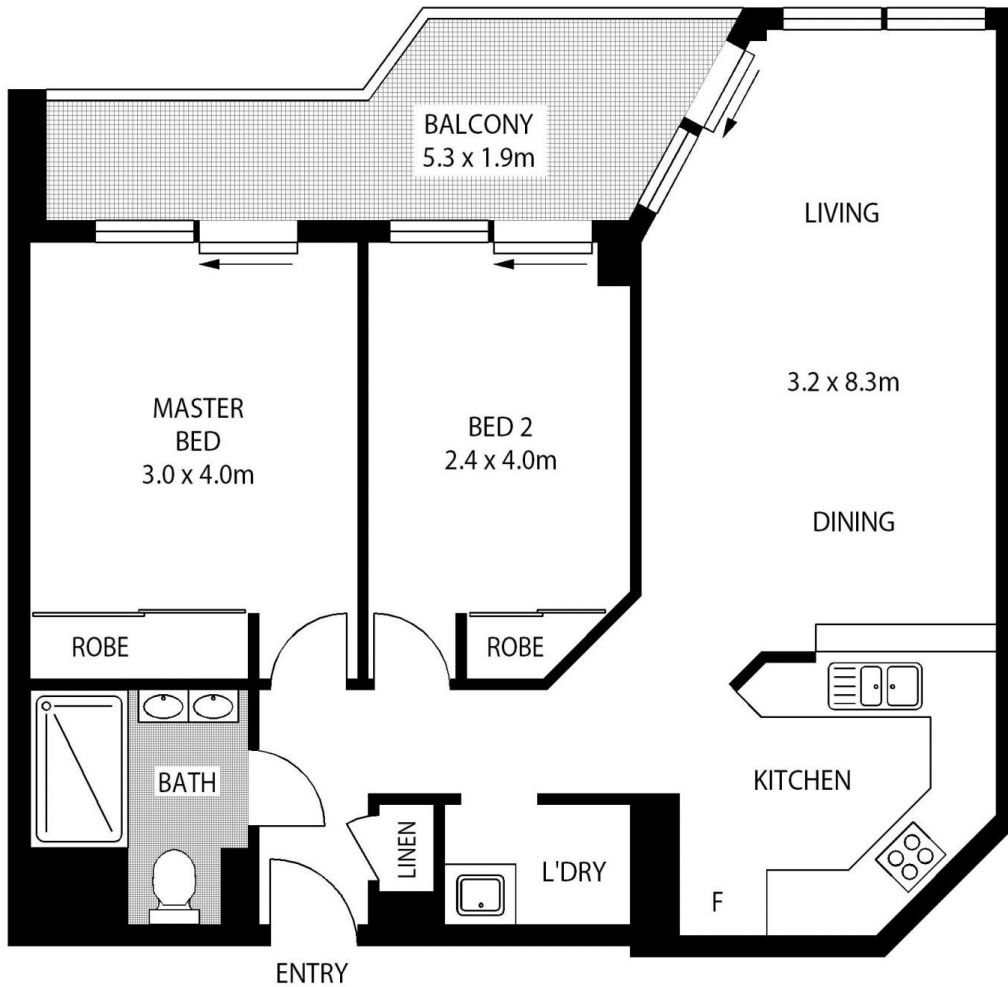
 ettiene@morton.com.au

Arman Zounuzy

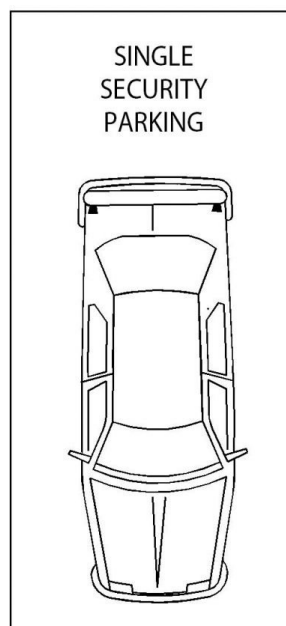
 0410 539 793

 arman.zounuzy@morton.com.au

morton.com.au



LEVEL FIFTEEN



156/336 SUSSEX STREET

SYDNEY

SCAPE Floor Planning Disclaimer: This floor plan is conceptual only. It is provided for illustrative purposes only and should not be relied upon. We make no guarantee as to the correctness of this plan. All interested parties should make and rely on their own enquiries in determining the accuracy of the information contained in this floor plan.