



**morton.**

**Woolloomooloo** 541/6 Cowper Wharf Roadway

🛏 3 🚗 2 🚗 1

Wake up to stunning water views in this top-floor, 3-bedroom apartment. The double-height spaces, cathedral ceilings, and skylights fill the home with natural light, creating a bright and airy atmosphere. The spacious interior has been tastefully refurbished to the highest standards. Enjoy watching navy boats glide by or relax with a book on the mezzanine, feeling as if you're floating. As dusk falls, take in the enchanting sight of the moon rising over Potts Point and its twinkling lights.

- The generous master suite is located at the top of a floating staircase and extends over the living area.
- 2nd bedroom with its own ensuite.
- 3rd bedroom or study
- Internal laundry, reverse cycle aircon
- Easy care timber flooring
- A state-of-the-art culinary Boffi kitchen that's equipped with a large range of special features.
- On site Wharf parking
- Video intercom

**View**

As advertised or by appointment

**Agents**

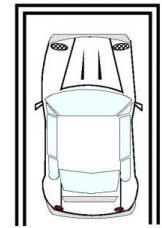
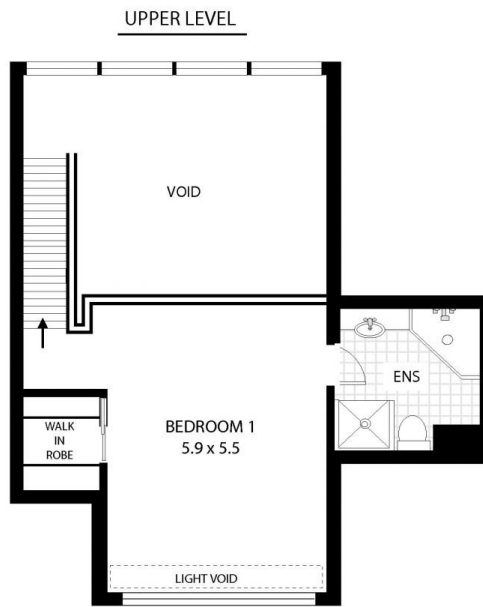
**Noel Jenkins**

📞 0410 593 694  
 ✉ noel@morton.com.au

**Christian Postiglione**

📞 0400 074 525  
 ✉ christian.postiglione@morton.com.au

**morton.com.au**



SECURE  
CAR SPACE

## 541/6 Cowper Wharf Rd, Woolloomooloo

All measurements are approximate only. Plan is provided as an indication of layout

