



morton.

Woolloomooloo 420/6 Cowper Wharf Roadway

 1  1  1

Located at Woolloomooloo Finger Wharf, this large one bedroom apartment has absolute water front views towards Potts Point and Garden Island. Balconies are a rare feature for one bedroom apartments in the Wharf, which makes this apartment a must see.

- Functional floor plan that maximises space and utilizes views
- Fully furnished
- Combined living/dining area with water views
- Kitchen and bathroom with granite finishes
- Reverse cycle air conditioning, internal laundry
- 24 hour on site security
- One secure car space located Lincoln Crescent

View

As advertised or by appointment

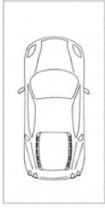
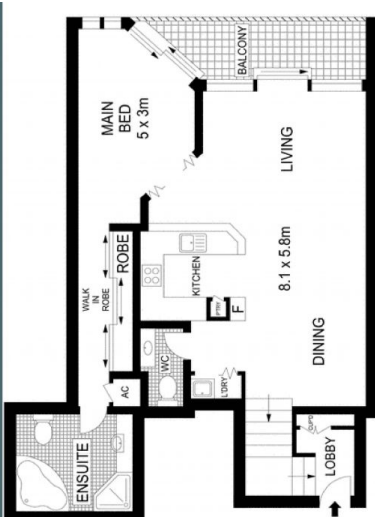
Agent

Reza Nabavi

 0419 283 588

 reza.nabavi@morton.com.au

morton.com.au



LEVEL FOUR



Scale in meters. 1:500 (approx). Dimensions in millimeters. All information contained herein is gathered from records we believe to be reliable. However, we cannot guarantee its accuracy and interested persons should rely on their own records.

420/6 Cowper Wharf Road, Woolloomooloo

McGrath

