



**morton.**

**Surry Hills** 1510/20 Pelican Street



This enormous and stunning penthouse-style apartment is one of a kind and must be seen to be appreciated. At 113 sqm, this contemporary one bedroom unit offers the living space of a large two bedroom.

You'll enjoy light filled, open plan living on the 15th floor of this highly sought after security building. With floor-to-ceiling windows throughout to bring in spectacular views, this amazing apartment is steps from Oxford St, Museum Station, restaurants & bars, transport, Harmony Park, gyms and all the CBD has to offer.

? Envious corner position with panoramic views south to Botany Bay, and Central, and to Sydney Tower, Oxford St, and the city, with harbour glimpses.

? Unique floorplan, versatile open plan living, high ceilings and extensive floor-to-ceiling windows.

? Freshly painted throughout.

? Large bedroom with built-in wardrobe.

? Two balconies.

#### **View**

As advertised or by appointment

#### **Agent**

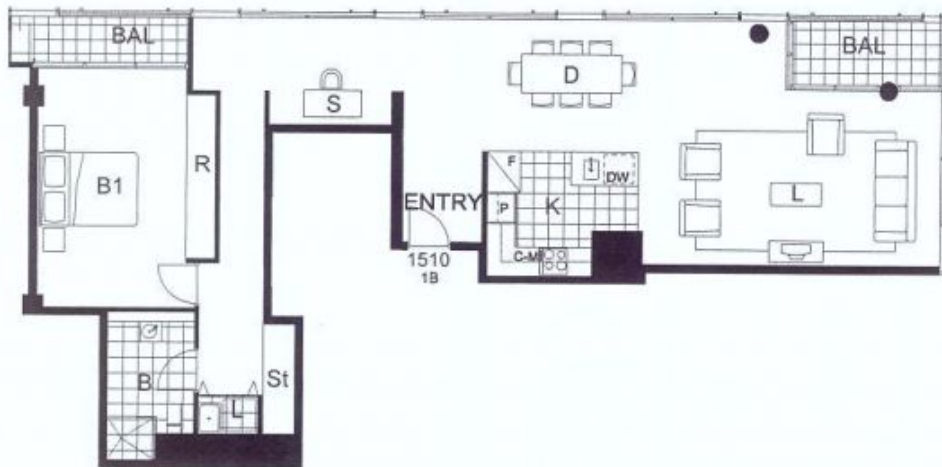
**Reza Nabavi**

📞 0419 283 588

✉ reza.nabavi@morton.com.au

**morton.com.au**

# Apartment 1510



LEVEL 15

