



morton.

Waterloo 705/16 Gadigal Avenue

 2  2  1

705/16 Gadigal Avenue, Waterloo

Experience refined urban living in this contemporary apartment with an open park outlook. Situated on the 7th floor of 'Emblem', this northeast-facing residence features:

- ? Luxe engineered flooring and high ceilings throughout
- ? Spacious living and dining areas flowing to a generous balcony with park views
- ? Streamlined stone and gas kitchen with Miele appliances
- ? Private study area with built-in storage and ducted air conditioning
- ? Two queen-sized bedrooms with built-in robes, master with ensuite
- ? Luxury bathrooms, concealed laundry, and a single secure car space
- ? Additional storage cage and access to a communal rooftop terrace with BBQ facilities

Ideally located in a vibrant precinct near Danks Street's shops, eateries, and galleries, as well as Victoria Park's East Village.

View

As advertised or by appointment

Agent

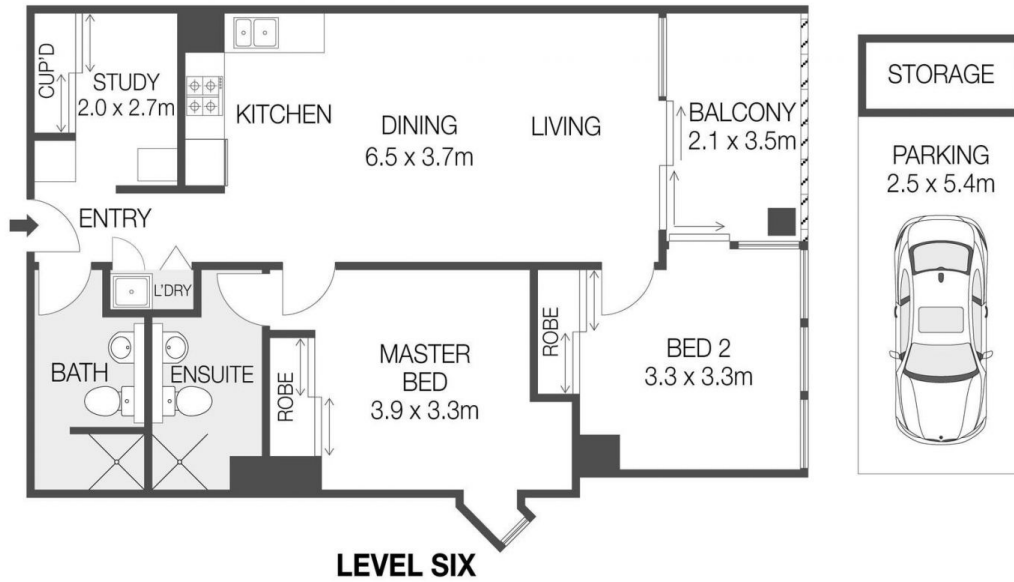
Ray Li

 0401 311 667

 ray.li@morton.com.au

morton.com.au

705/16 Gadigal Avenue
WATERLOO



LEVEL SIX

0 1 2 3 4 5