



morton.

Zetland G88/10 Peters Street

 2  2  1

Nestled in the heart of Sydney's vibrant new hub, The Daniel offers unparalleled living between the bustling growth corridor linking the eastern beaches and the CBD. The Daniel is positioned between the Gunyama Aquatic Centre, public parks, and transport connections. It also offers outstanding lifestyle opportunities with private places to relax, and community places to socialise, exclusive to its residents.

- ? State-of-the-art stainless-steel appliances
- ? Stone benchtops complimented by high-end cabinets
- ? Expansive living spaces and generously sized bedrooms
- ? Hard-wearing timber flooring throughout
- ? Energy-efficient LED lighting in all spaces
- ? Secure building with video intercom
- ? Climate-controlled comfort with integrated air conditioning
- ? Spectacular rooftop communal spaces boasting panoramic city views
- ? Luxury living with furnished apartments available
- ? EV charging available with selected apartments
- ? Unparalleled convenience with our custom app offering

morton.com.au

View

As advertised or by appointment

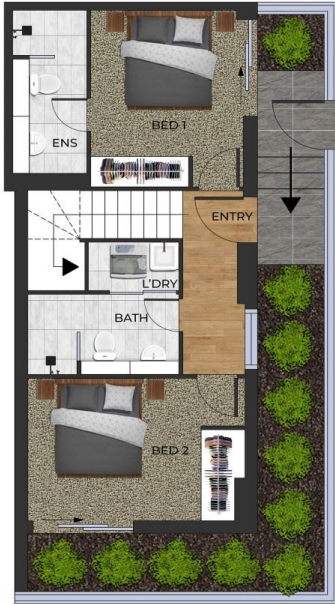
Agent

Raymond Huynh

 0436 113 121

 zetlandleasing@morton.com.au

THE DANIEL
BY LINCON



G88
10 Peters Street
Zetland



DISCLAIMER: PLANS SHOWN ARE FOR MARKETING PURPOSES ONLY. ALL DIMENSIONS ARE APPROXIMATE AND NOT TO SCALE. THEY ARE SUBJECT TO ERRORS AND INNACURACIES AND NO LIABILITY WILL BE ACCEPTED. INTERESTED PARTIES SHOULD MAKE THEIR OWN INQUIRIES.

