



morton.

Penrith 305/10 Aviators Way

 2  2  1

Positioned in what is undoubtedly Penrith's premier boutique estate, this north-east facing apartment captures amazing views over the oval and the Blue Mountains. With the perfect aspect and height you will enjoy the beautiful morning sun as it rises from the east.



- Third floor position taking full advantage of the north east aspect
- Light filled open design with floorboards and air con and blinds
- Large entertainer's balcony with park and oval views
- Large eat-in gas kitchen with ample storage space and Omega appliances
- Two carpeted double bedrooms with mirrored built-ins, ensuite and air con
- Separate study area, basement car space plus a storage cage on title
- Community playground and BBQ facilities at your doorstep, pet friendly

View



As advertised or by appointment

Agents

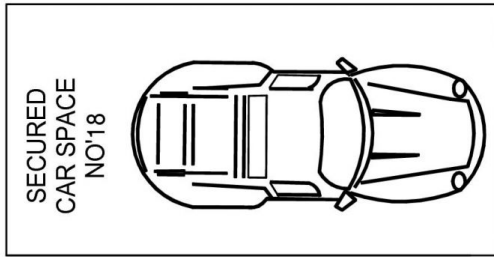
David Lipman

 0409 663 535
 david@morton.com.au

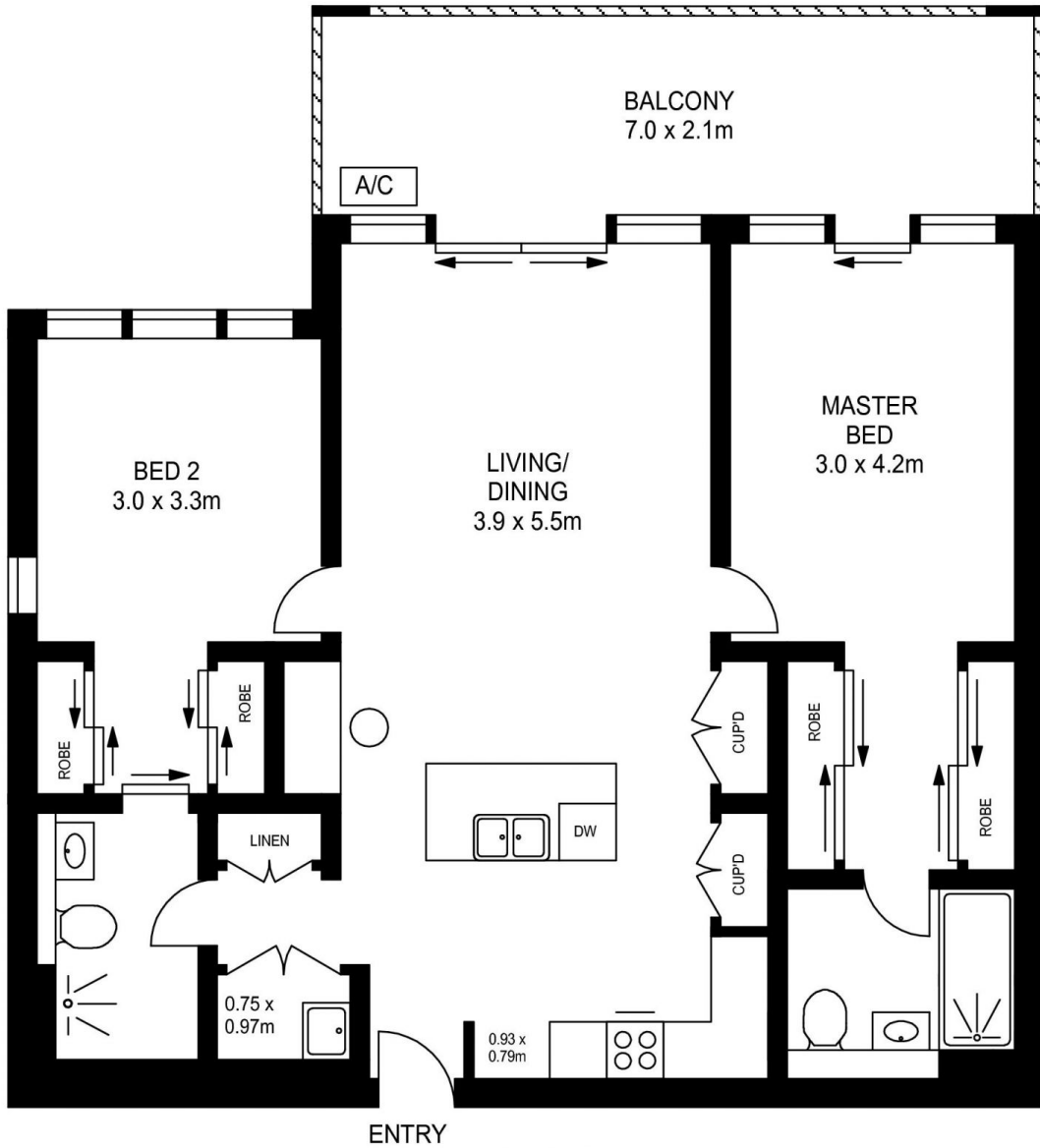
SJ Singh

 0417 085 519
 sj.singh@morton.com.au

morton.com.au



LEVEL B1



LEVEL THREE

APPROX. INT. AREA : 79m²

APPROX. EXT. AREA : 15m²

TOTAL AREA INCLUDING CAR SPACE AND STORAGES : 109m²

305/10 AVIATORS WAY, PENRITH



www.assetphotographers.com.au

Please note these measurements are approximate only. The plans is intended as a rough guide for illustrative purpose. It is not warranted or guaranteed to be correct nor it is part of the sale or rental contract