



**morton.**

**Penrith** 10/136-140 High Street

 2  2  1

This superb near new 1st floor apartment is located close to the Nepean Private and Public Hospitals, Penrith selective high school and Penrith CBD.

- Two bedrooms with ensuite to master
- Large bedrooms
- Tiled floor tiles throughout
- Entertainers kitchen with soft close cupboards, dishwasher and ample storage
- Modern bathroom
- Sunny north facing balcony
- Pet friendly body corporate
- Secure complex with outdoor common area
- Lift, basement parking and storage cage

**View**

As advertised or by appointment

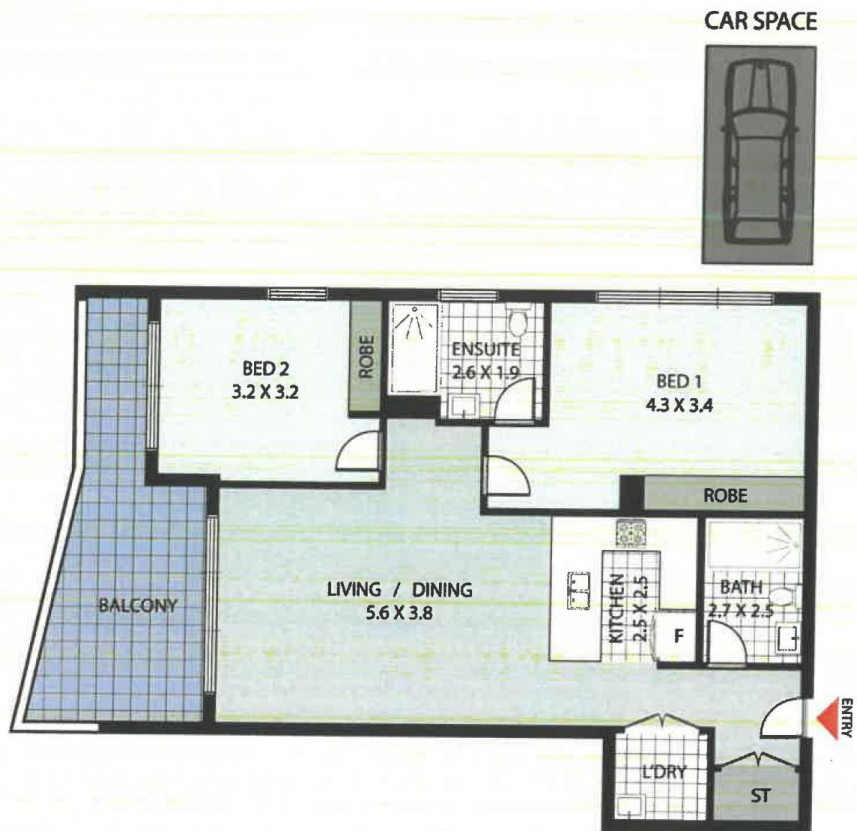
**Agent**

**Georgia Borland**

 0448 430 247

 georgia.borland@morton.com.au

**morton.com.au**



**Centrum  
Heights**

## FLOOR PLAN



10/134-140 HIGH STREET, PENRITH

NOT TO SCALE, ALL MEASUREMENTS ARE APPROXIMATE METRES, DRAWN FOR PRESENTATION PURPOSES ONLY  
DISCLAIMER: While care has been taken in the preparation of these particulars, no responsibility is accepted for the accuracy of the whole or any part and interested persons are advised to make their own enquiries and satisfy themselves in all respects.