



morton.

Luddenham 18 Farmingdale Court

7 5 8

Step inside this large, newly built home crafted specifically for multi-generational family living. Set on an acre of private land, this expansive two-story residence offers peaceful district views and enormous development potential. Sunlight pours through the floor-to-ceiling glass, infusing the interior with warmth and creating an inviting atmosphere.

- Large family home caters for multiple generations with separate living/bedroom accommodation
- Two light-filled contemporary kitchens with stainless steel appliances
- The primary kitchen also includes a convenient butler's pantry and stone benchtops
- Double height living areas create an open and airy ambience, maximising natural light
- Two large living areas plus a separate rumpus room for the kids
- Work from home comfortably with two dedicated home offices
- All bedrooms are generously sized and come with built-in

View

As advertised or by appointment

Agents

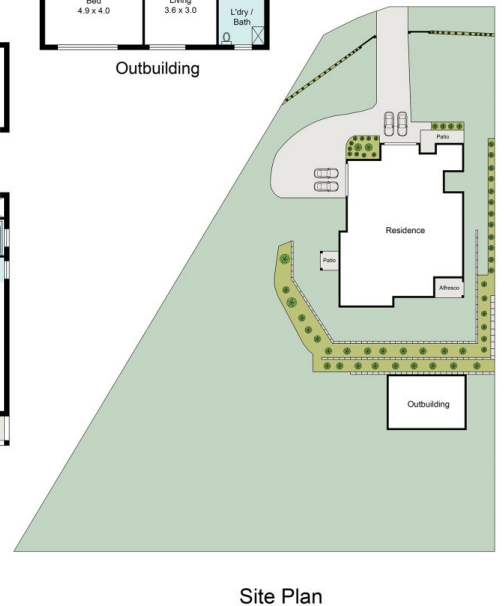
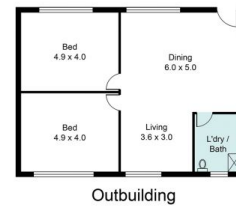
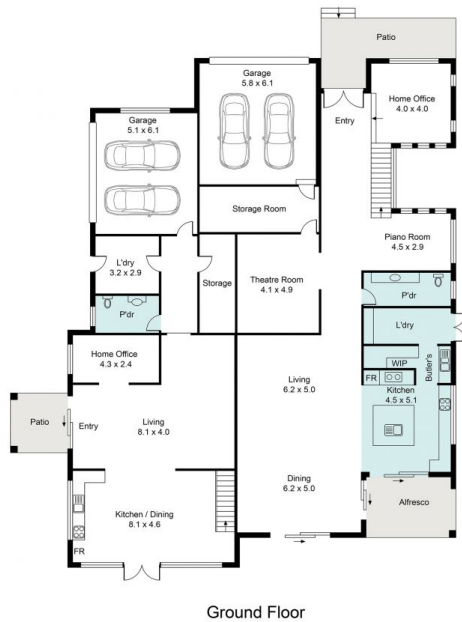
Konstantin Melnikov

0421 540 424
konstantin@morton.com.au

Ferenc Goemoeri

0447 025 423
ferenc@morton.com.au

morton.com.au



18 Farmingdale Court, Luddenham

Every care has been taken to verify the accuracy of the details and dimensions in this property plan. Prospective purchasers are advised to make their own enquiries to satisfy themselves in all respects. The plan is a representation only and is not necessarily to scale.