



morton.

Zetland 690/10 Peters Street

🛏 2 🚿 2 🚗 1

Nestled in the heart of Sydney's vibrant new hub, The Daniel offers unparalleled living between the bustling growth corridor linking the eastern beaches and the CBD. The Daniel is positioned close to the Gunyama Aquatic Centre, public parks, and transport connections. It offers outstanding lifestyle opportunities with private places to relax, and community places to socialise, exclusive to its residents.

View

As advertised or by appointment

Agent

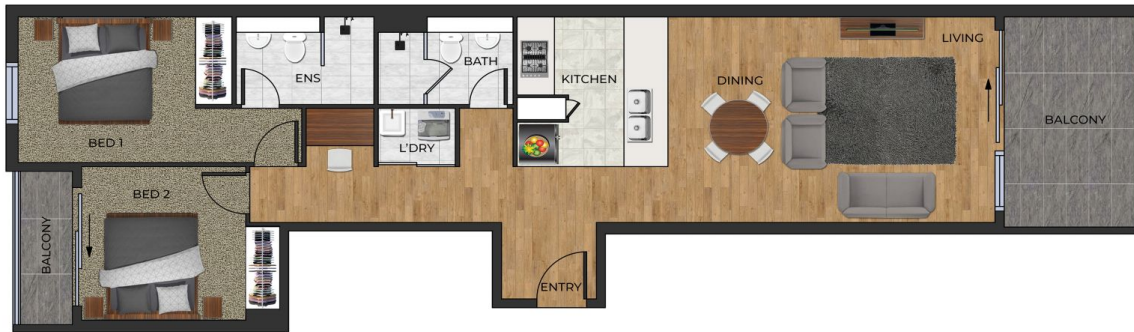
Raymond Huynh

📞 0436 113 121

✉ zetandleasing@morton.com.au

- ? Peters Street is accessed off George Julius Avenue
- ? State-of-the-art stainless-steel appliances
- ? Stone benchtops complemented by high-end cabinets
- ? Expansive living spaces and generously sized bedrooms
- ? Hard-wearing timber flooring throughout living areas
- ? Energy-efficient LED lighting
- ? Secure building with video intercom
- ? Climate-controlled comfort with integrated air conditioning
- ? Spectacular rooftop communal spaces boasting panoramic city views
- ? EV charging available with selected apartments
- ? Custom app offering concierge services at your fingertips

morton.com.au



690
10 Peters Street
Zetland



DISCLAIMER: PLANS SHOWN ARE FOR MARKETING PURPOSES ONLY. ALL DIMENSIONS ARE APPROXIMATE AND NOT TO SCALE. THEY ARE SUBJECT TO ERRORS AND INNACURACIES AND NO LIABILITY WILL BE ACCEPTED. INTERESTED PARTIES SHOULD MAKE THEIR OWN INQUIRIES.

