



morton.

Wentworth Point 206/1A Burroway Road

🛏 2 🚿 2 🚗 1

Delivering a modern blend of quality design, stylish finishes and a generous in/outdoor environment, this two bedroom plus study courtyard apartment is a private haven in the popular and well-managed Jewel community. It has been well-planned to embrace low-maintenance living and entertaining, plus it provides a very peaceful retreat in a sought-after building that forms part of the vibrant Pierside retail precinct, right on the waterfront.

- A private elevated position capturing lovely green outlooks
- Crisp and fresh interiors feature a bright open planned design
- A courtyard-sized terrace includes a sheltered dining space
- Quality modern kitchen with dishwasher and gas cooktop
- A good-sized double bedrooms that opens onto the courtyard
- Separate study/media area, modern bathroom, internal laundry
- Air-conditioning throughout, intercom & timber-look ceramic tiles

morton.com.au

View

As advertised or by appointment

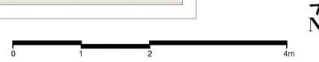
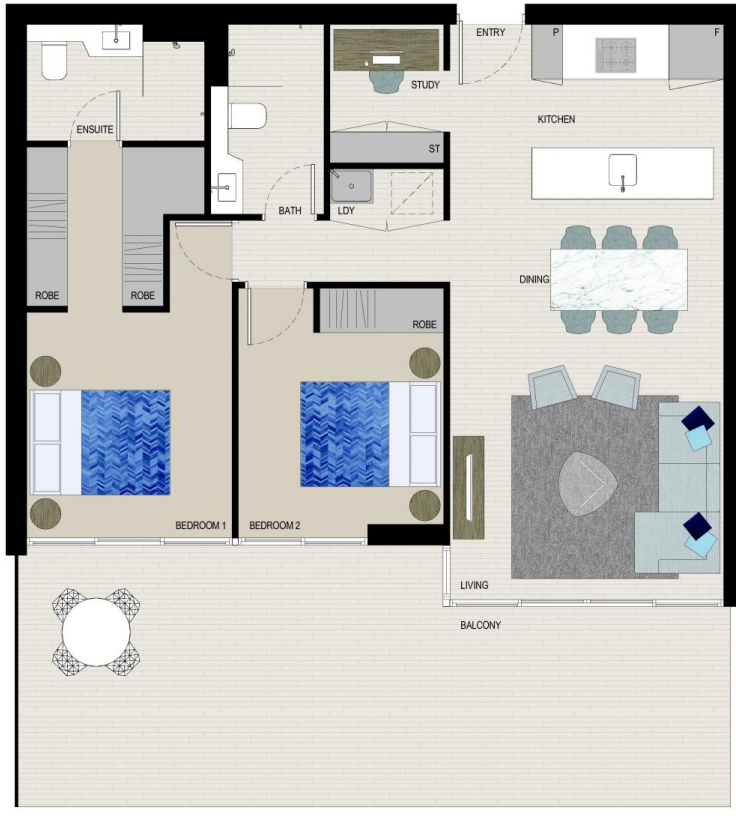
Agents

Dylan Choe

📞 0416 932 977
✉ dylanchoe@morton.com.au

Vivian Zhang

📞 0447 964 200
✉ vivian@morton.com.au



JOINTLY DEVELOPED BY




Disclaimer: This floor plan has been prepared for marketing purposes only. All descriptions, dimensions, depictions and other details in this floor plan may not be to scale and may vary from the property as built. Your attention is drawn to the special conditions of the contract for sale of land. No third party has any authority to make or give any representation or warranty in relation to the property unless the representation or warranty is confirmed by Payce Communities Wentworth Point Pty Ltd and included in the contract for sale of land. SCPA Disclaimer: In this disclaimer Development means Payce Communities Wentworth Point Pty Ltd ACN 604 420 744 and SA FWT Development Pty Ltd ACN 164 281 145. Development means the retail and residential development at Burroway Road Wentworth Point known as Jewel. SCPA means Sydney Olympic Park Authority a statutory body constituted under the Sydney Olympic Park Authority Act 2002 (NSW). The Developer is responsible for all matters in connection with undertaking and completing all of the works required to be performed or carried out to complete the Development and SCPA has no responsibility or involvement in those matters.

SALES BY



(Rev C_01.06.15)



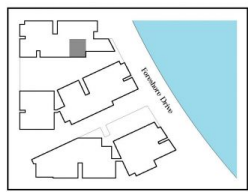
JEWEL

WENTWORTH POINT

APARTMENT 206

LOT 6
2BED + STUDY

Internal	79 sqm
External	36 sqm
Total	115 sqm



LEVEL 2

JEWEL DISPLAY CENTRE
1 Burroway Road, Wentworth Point 2127
♦ 1300 888 778 ♦ jewelresidences.com.au