



morton.

Penrith 401/26C Lord Sheffield Circuit


 3  2  2

View

As advertised or by appointment

Agent

Anthony Fleming

 0437 929 484

 anthonyf@morton.com.au

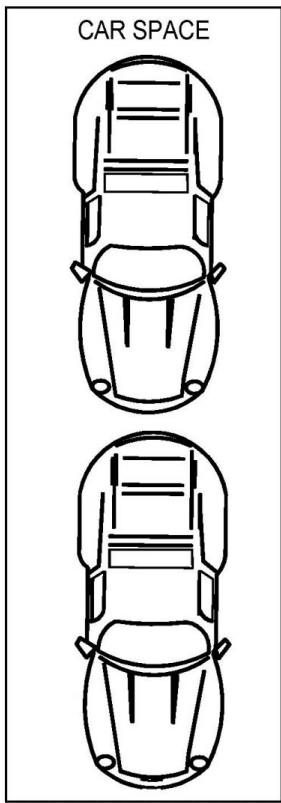
One of Thornton's most prestigious buildings and in Penrith's emerging urban centre, this three bedroom apartment is perfect for downsizers, upsizers, pet lovers and first home buyers. Featuring 114sqm of internal/external living area in an award-winning building, with a reclaimed-look brick facade, is a striking characteristic that makes living in Lumina an aspiration place to live, with five rooftop common areas.

- European designed gas kitchen, with updated finishes and custom storage, including a timber overhang to the island bench for more eat-in space and pendant lights
- Two bathrooms with mosaic tiles and a wall hung basin with storage
- Ducted air con throughout with dual zone control, plantation shutters throughout
- Floorboards in the well-appointed living & kitchen areas and carpet to the bedrooms
- Private balcony off the master, with his and her built-in robes with ensuite
- Entertainers balcony off the living and 3rd bedroom, with

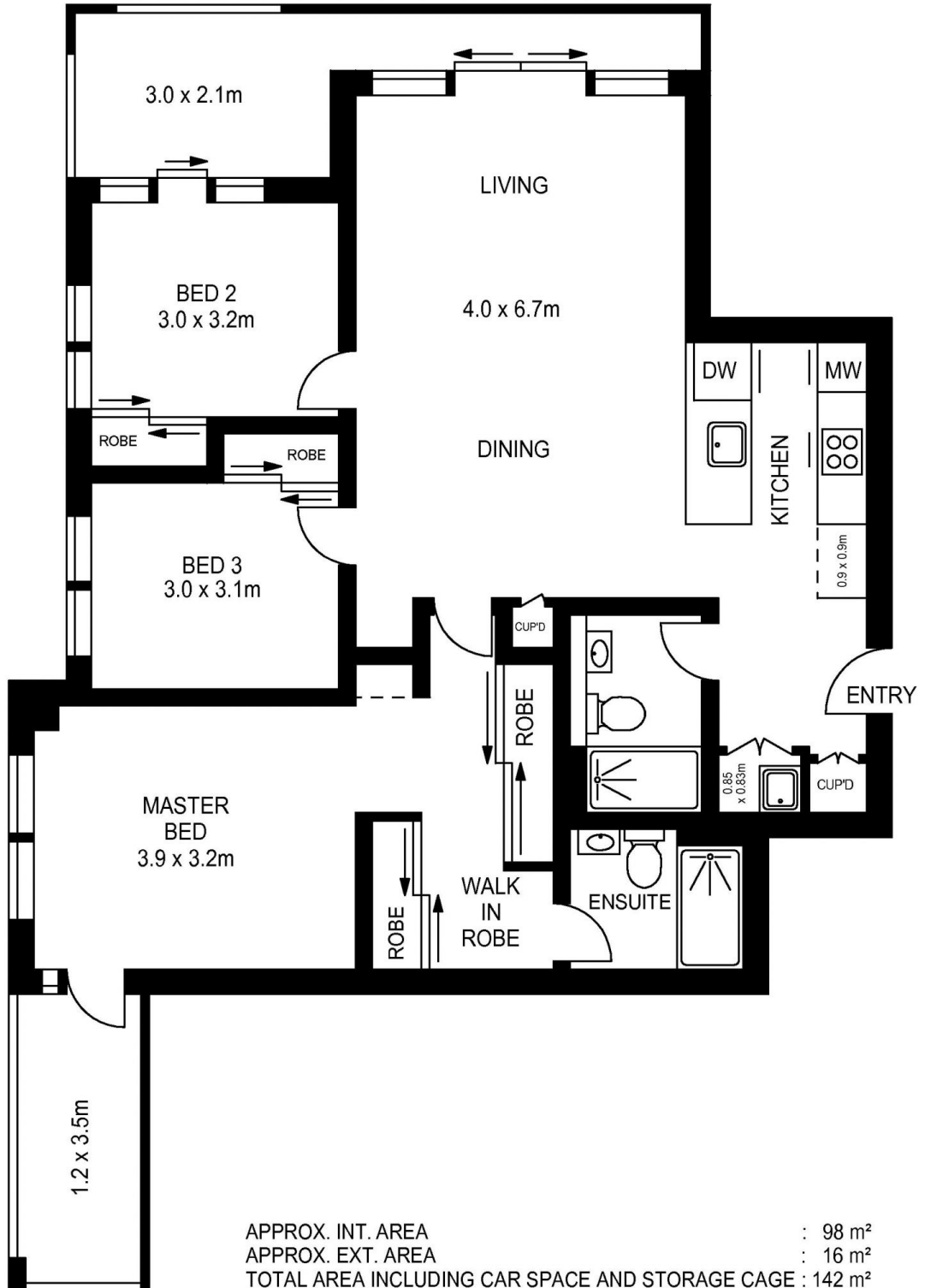
morton.com.au



LEVEL B1



LEVEL B2



APPROX. INT. AREA : 98 m²
 APPROX. EXT. AREA : 16 m²
 TOTAL AREA INCLUDING CAR SPACE AND STORAGE CAGE : 142 m²

401/26C LORD SHEFFIELD CIRCUIT, PENRITH



www.assetphotographers.com.au

Please note these measurements are approximate only. The plans is intended as a rough guide for illustrative purpose. It is not warranted or guaranteed to be correct nor it is part of the sale or rental contract