



morton.

Sydney 805/35 Shelley Street

 3  2  2

Overlooking Darling Harbour and Barangaroo with a northern aspect from all rooms, this apartment epitomises luxury urban living. Its generous spaces, bathed in abundant natural light, offer unparalleled convenience and a lifestyle of unmatched quality. The breathtaking harbour views further enhance the allure of this exceptional residence, making it a true embodiment of size, light and luxury.

- Expansive 157sqm layout featuring spacious living and dining areas
- Seamless transition to a north-facing entertainer's terrace with water vistas
- Recently upgraded kitchen with stone countertops, gas stove, ample storage
- Dual bathrooms, an extra powder room and a primary ensuite with a bathtub
- Two bedrooms with walk-in wardrobes for additional convenience
- Internal laundry, air conditioning, intercom and double parking

morton.com.au

Auction

Saturday, 17 Aug 2024, 3:00 pm

View

As advertised or by appointment

Agents

Ettiene West

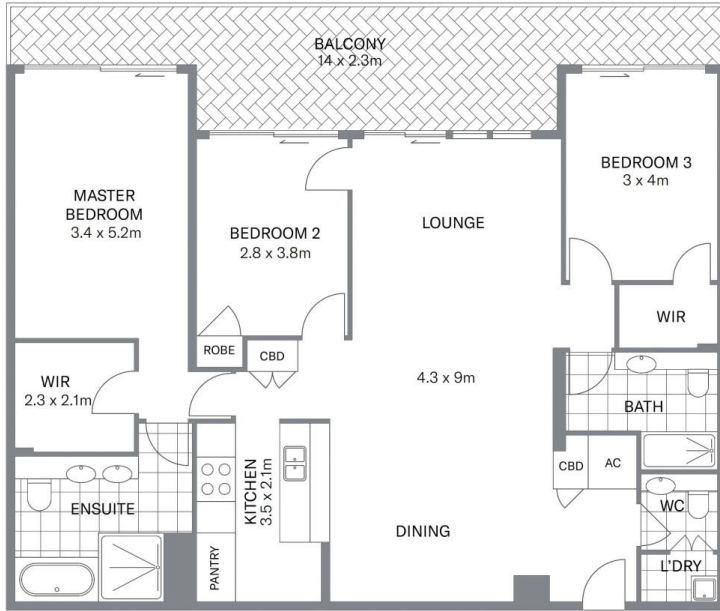
 0410 593 749

 ettiene@morton.com.au

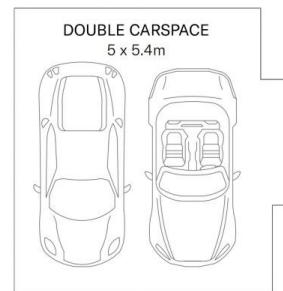
Arman Zounuzu

 0410 539 793

 arman.zounuzu@morton.com.au



LEVEL EIGHT



BASEMENT TWO



Indicative only. Dimensions are approximate. All information contained herein is gathered from sources we believe to be reliable. However we cannot guarantee its accuracy and interested persons should rely on their own enquiries.