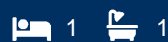




morton.

Warwick Farm 39/9-13 Goulburn Street



Key features include:

- ? Modern studio design with easy ground floor access
- ? Tiled floors throughout for practicality and style
- ? Full-size bathroom, air conditioning, and a full-size kitchen with internal laundry facilities

Please note, the information provided in this advertisement is for illustrative/marketing purposes only and does not form part of the lease agreement. Prospective tenants are advised to conduct their own independent enquiries, including those related to utility and internet connections.

View

As advertised or by appointment

Agent

Ray Li

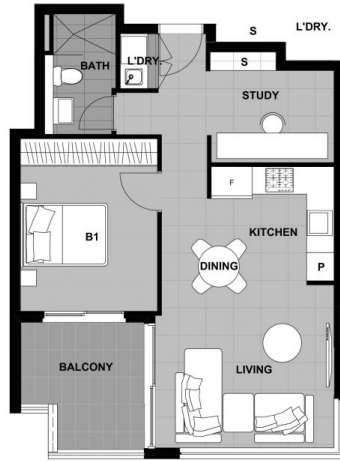
📞 0401 311 667

✉️ ray.li@morton.com.au

morton.com.au

NORTH

9-13 GOULBURN STREET
WARWICK FARM
CITY OF LIVERPOOL



LEVEL	UNIT
2	15
4	27
6	39

1 BED + STUDY . 1 BATH .
1 CARSPACE

UNIT AREA	
INTERNAL	52 m ²
EXTERNAL	7 m ²
TOTAL	59 m²



REVISION C
27.9.2018



0 1 5
SCALE: 1:75



Disclaimer: Please note that this floor plan is a guide only and was prepared prior to completion. The information contained herein is believed to be correct but is not guaranteed. Dimensions are approximate. Changes may be made during construction. All dimensions, areas, fittings and applications may be subject to change without notice in accordance with the provisions of the contract of sale. The furniture depicted is not included with any sale. Prospective purchasers may rely on their own enquiries.