



**morton.**

**Penrith** 410/26B Lord Sheffield Circuit Circuit

🛏 1 🚗 1 🚗 1

Lumina is an exciting precinct perfectly positioned within Penrith's emerging urban centre - a vibrant community to suit everyone and every lifestyle. This one-bedroom unit located in the heart of Thornton features 66sqm of internal/external living area. An award-winning building, Lumina is a buyer's dream home with rooftop common areas and this north facing unit is perfectly positioned within the complex on level 4.

- Split system air con to living, floorboards throughout and grey colour scheme
- Westinghouse appliances to the galley kitchen with study nook and storage
- Internal laundry with dryer, north-facing covered balcony
- Large bedroom with balcony access and built in wardrobes
- Spacious bathroom with shower and wall hung vanity with storage
- Secure basement car space with bicycle lock up room
- Rooftop common area facilities include an herb garden, BBQ area and swing
- Built in 2020 with 141 apartments across 3 towers to the pet

**View**

As advertised or by appointment

**Agents**

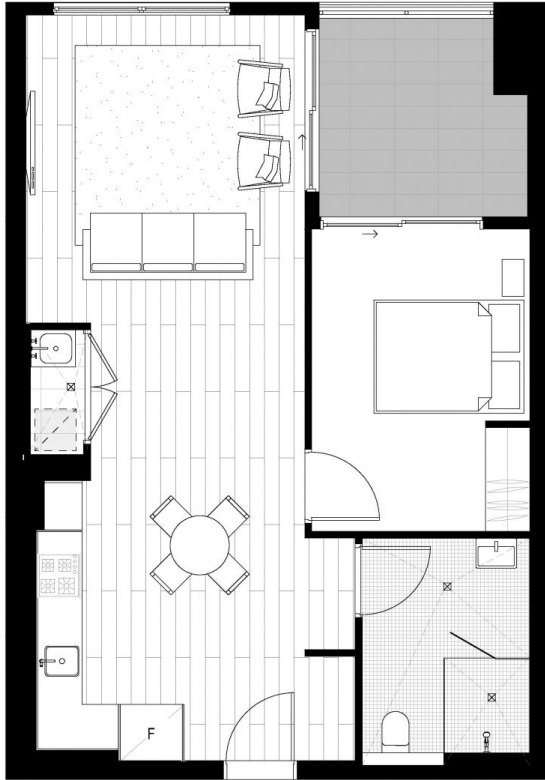
**David Lipman**

📞 0409 663 535  
 ✉ david@morton.com.au

**Jamie Bae**

📞 0409 968 604  
 ✉ jamie.bae@morton.com.au

**morton.com.au**



# LUMINA

SHEFFIELD QUARTER

THORNTON

ONE BEDROOM  
APARTMENT

UNIT 210, 310, 410

INTERNAL AREA 59 m<sup>2</sup>  
EXTERNAL AREA 7 m<sup>2</sup>

TOTAL 66 m<sup>2</sup>

PARKING 1



NORTH

## URBAN

This floor plan has been prepared for marketing purposes only. All descriptions, dimensions, depictions and other details in this floor plan may not be to scale and may vary from the property as built. Your attention is drawn to the special conditions of the contract for sale of land. No third party has any authority to make or give any representation or warranty in relation to the property unless the representation or warranty is confirmed by Developer and included in the contract for sale of land.