



morton.

Wentworth Point 312/19 Hill Road

 2  2  1

Located in Sorrento at The Waterfront, here is your opportunity to move into this spacious north facing split level two bedroom apartment. Only a short stroll to The Piazza, local restaurants, convenience and pharmacy stores, and ferry services to Parramatta and Sydney CBD, with public transport links at your doorstep to Burwood and Sydney Olympic Park. The Waterfront is located moments to Sydney Olympic Park main venues and train station, Bicentennial Park and Millennium Parkland.


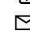
- Open plan living and dining flowing to north facing covered entertainer's balcony
- Modern gas kitchen with premium stainless steel appliances
- Oversized master bedroom with private access balcony, built in wardrobes and en-suite
- Internal laundry room with clothes dryer
- Secure basement car space with storage cage

View



As advertised or by appointment

Agents

Zarin Hossain

 0418 328 479
 zarin.hossain@morton.com.au

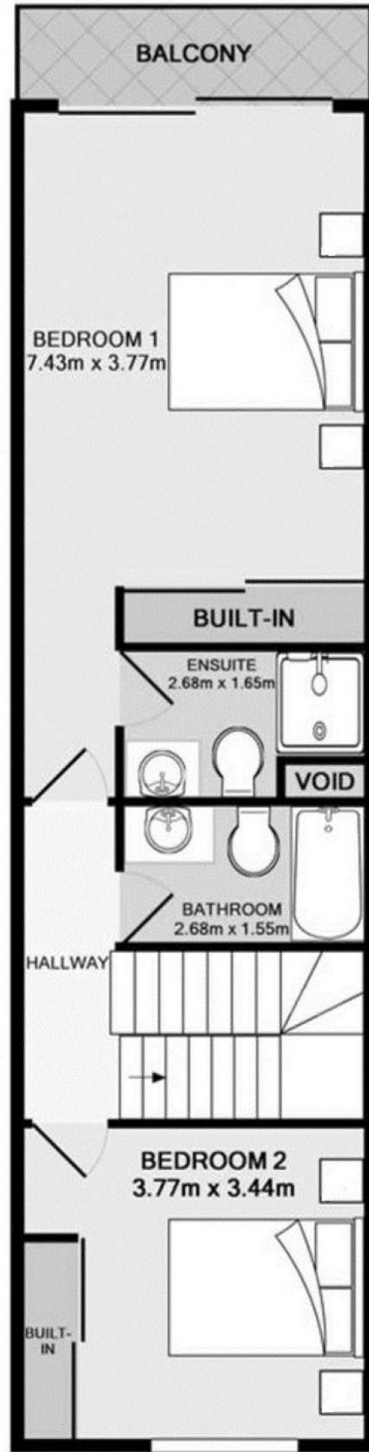
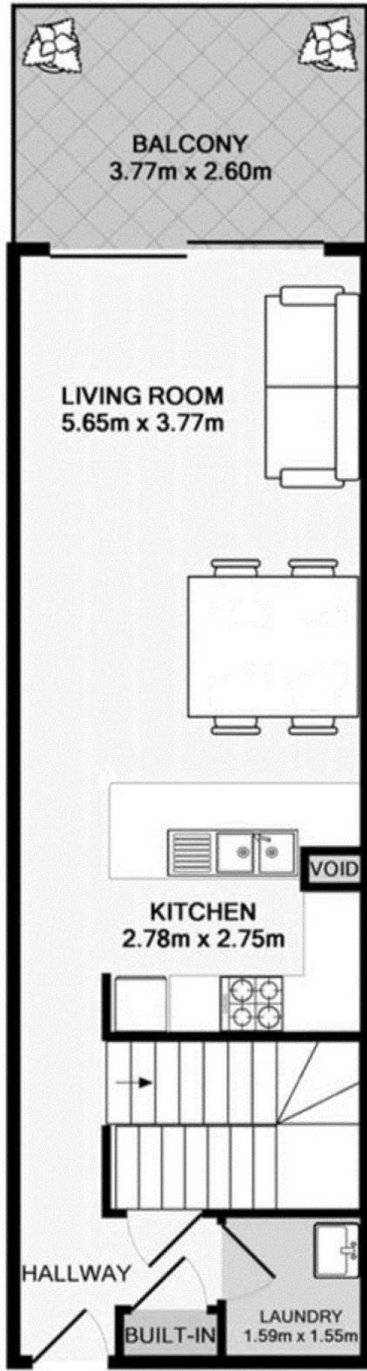
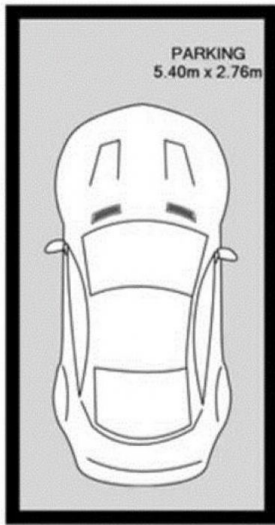
Nevena Tsahtarlis

 0428 835 910
 nevena@morton.com.au

morton.com.au



STORAGE



Disclaimer: Floor plans and site plans are intended as a guide only. They are not part of any legal document or title and are subject to errors, omission, and inaccuracies and should not be used as reference. Sizes and dimensions are approximate only. Interested parties should make their own enquiries.