



morton.

Wentworth Point 621/10 Half Street

🛏 1 🚿 1 🚗 1

Primely positioned in the heart of one of Sydney's most enthralling waterfront developments, metres from the Parramatta River, this sleek apartment enjoys a sun-drenched North aspect on the 6th floor of the 'Savannah' building at Wentworth Point Marinas.

It offers sophisticated low hassle living with premium quality finishes throughout and is only moments to Rhodes via Bennelong Bridge, city ferries from Olympic Park Wharf.

- Open plan lounge/dining with North facing aspect
- Furnished apartment
- Stylish stone kitchen has deluxe appliances and gas cooking
- Good sized bedroom plus a beautiful, fully tiled modern bathroom
- Internal laundry, built-in robes/storage and air conditioning
- Intercom & security parking space
- Complex pool and gym
- Near foreshore walk and cycleway, parks and playing fields

View

As advertised or by appointment

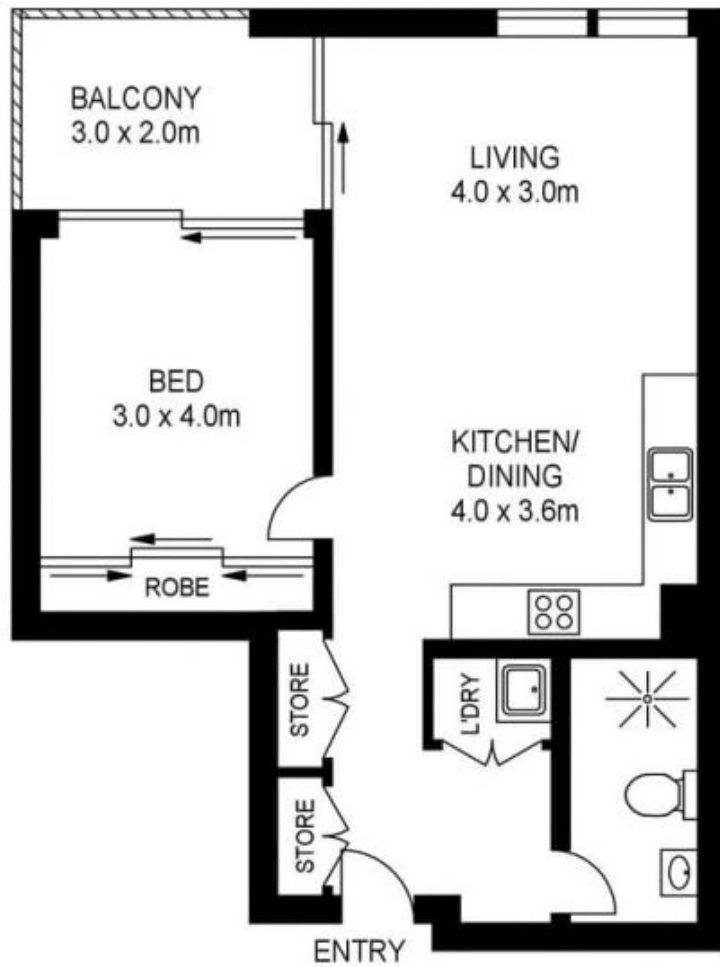
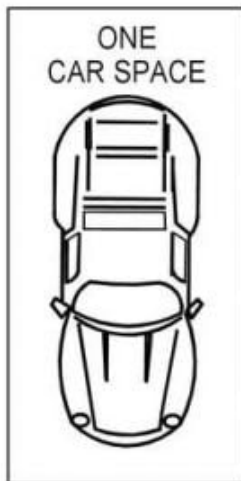
Agent

Nevena Tsahtarlis

📞 0428 835 910

✉ nevena@morton.com.au

morton.com.au



621/10 HALF STREET, WENTWORTH POINT



www.assetphotographers.com.au

Please note these measurements are approximate only. The plans is intended as a rough guide for illustrative purpose. It is not warranted or guaranteed to be correct nor it is part of the sale or rental contract