



morton.

Chippendale 2505/18a Park Lane

 3  2  2

This rare modern apartment is located in a vibrant city inner hub that offers the epitome of a cosmopolitan lifestyle and convenience.

Great investment opportunity with 3 bedrooms, 2 bathrooms and 2 parking spaces that is close to Sydney's best universities.

Apartment Features

- Sought-after building in a thriving urban location
- Open-plan living and dining area located on the buildings corner giving panoramic views of the city and surrounds
- Modern kitchen with stainless steel appliances and gas cooking
- Generous master room with ensuite, walk in robe and private balcony with city views
- Security building with intercom entry
- Oversized double car space (50sqm)
- Large balcony with expansive views
- Close to all facilities and public transport

morton.com.au

Auction

Saturday, 03 Aug 2024, 2:15 pm

View

As advertised or by appointment

Agents

James Crow

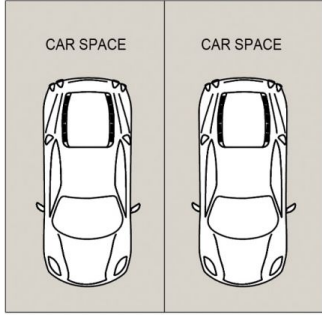
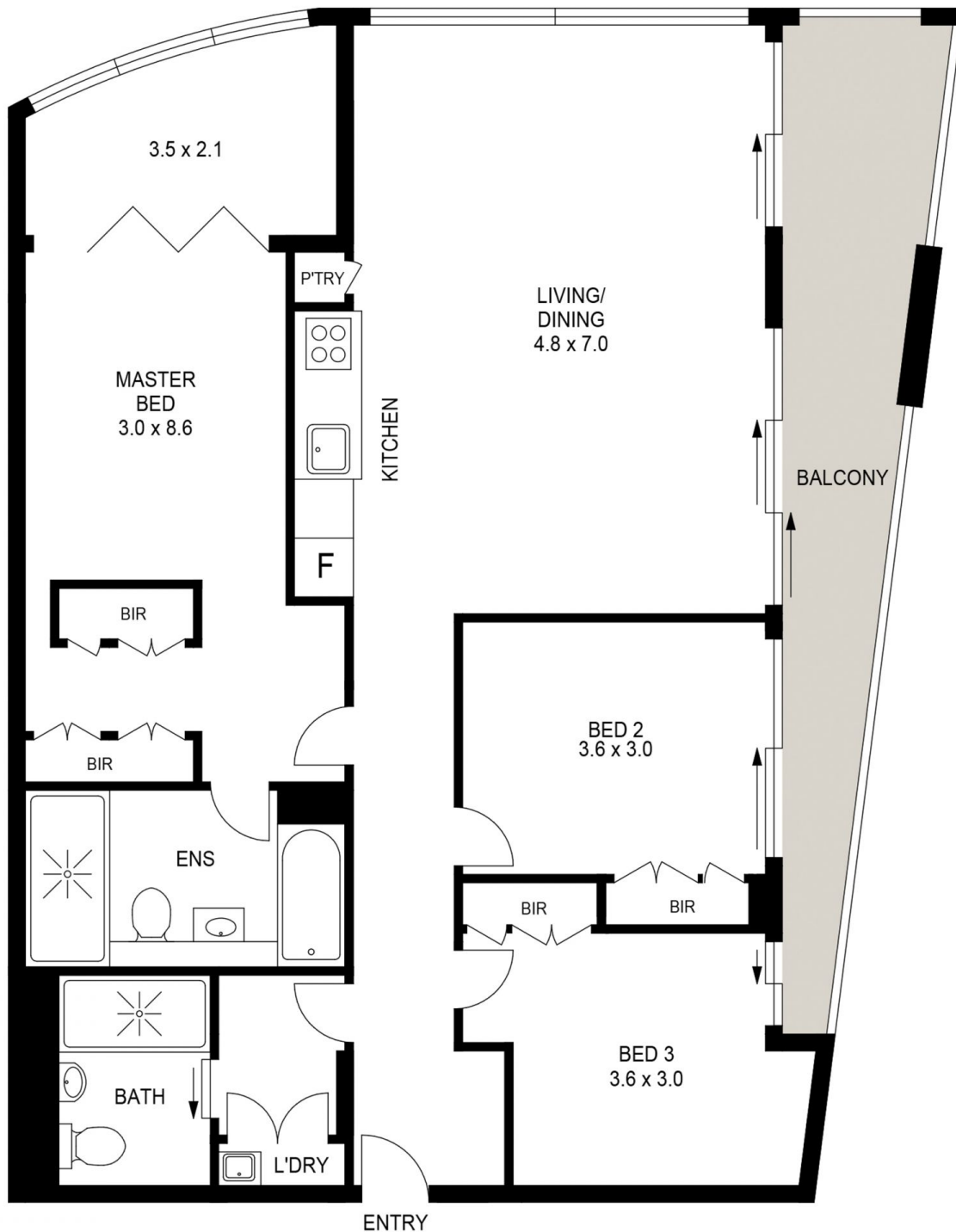
 0410 593 057

 james@morton.com.au

Brooklyn Clark

 0410 593 248

 brooklyn.clark@morton.com.au



PLANS SHOWN ONLY INDICATIVE OF LAYOUT. DIMENSIONS ARE APPROXIMATE.



CHIPPENDALE 2505/18A Park Lane

morton.