



morton.

Pyrmont 613/66 Bowman Street

 3
  2
  2

View

As advertised or by appointment

Agent

Cesar Rojas Soto

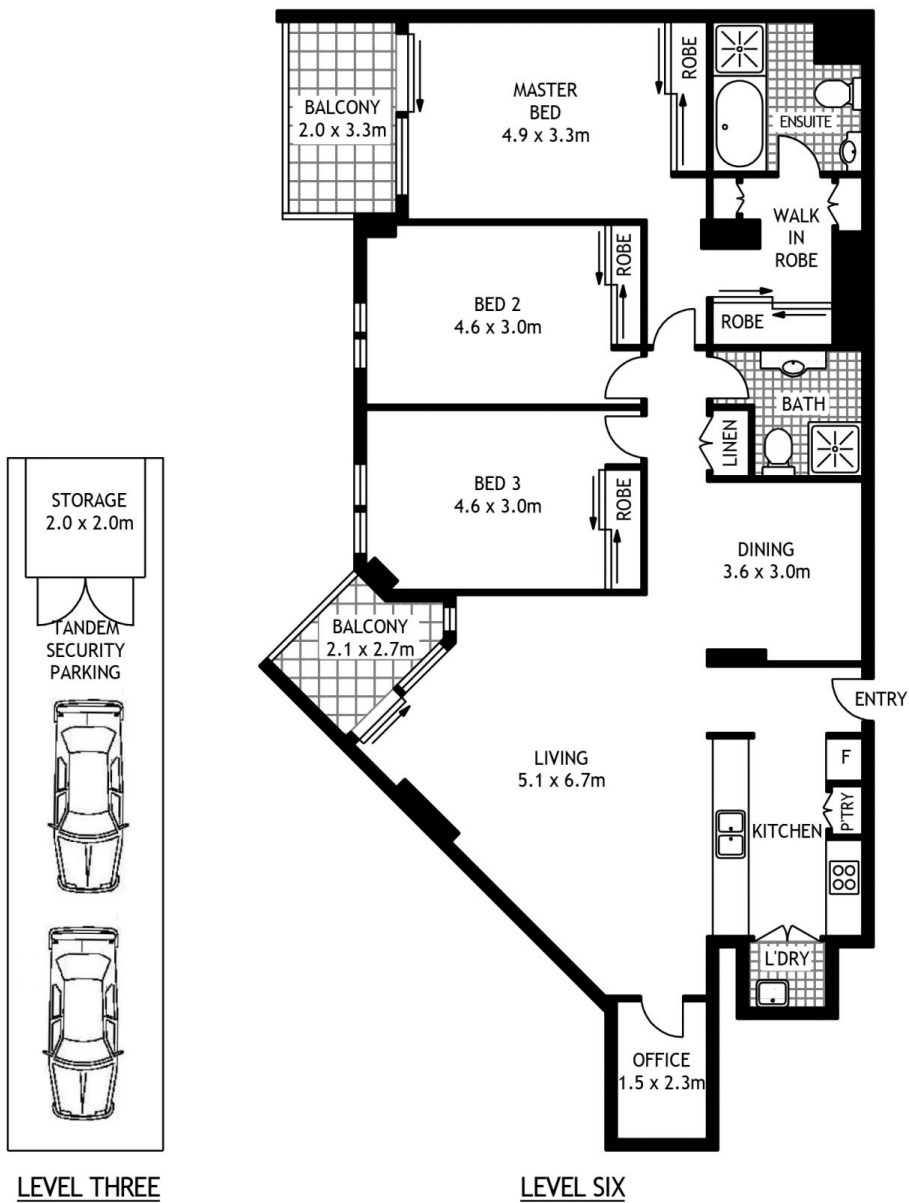
 0407 547 996

 cesar.rojas-soto@morton.com.au

Ultra-modern harborside living is at its most luxurious when boasting panoramic views that stretch over the water and surrounding area. This designer home combines smart stylish interiors, a light-filled layout and many quality design features to deliver a sensational low-maintenance property in a prized position within Jacksons Landing's renowned Fleetview tower. This exceptional property is enhanced by its highly prized setting amid this premium harbourside community. Step out the front door and you are within easy access from first-rate dining, theatre and wine bar options, as well as foreshore walks and the light rail station.

- A flowing interior layout with 139sqm of in/outdoor space
- A large single level floorplan with separate living and dining
- Two sunlit balconies both enjoy northerly harbour outlooks
- Three double bedrooms plus a bonus study/home office
- Master suite with ensuite, walk-in wardrobe and balcony
- Designer gas kitchen with quality granite benchtops
- Two security car spaces plus a customised storage shed
- Exclusive access to swimming pools, gyms and tennis courts

morton.com.au



613/66 BOWMAN STREET

PYRMONT

SCAPE Floor Planing Disclaimer: This floor plan is conceptual only, it is provided for illustrative purposes only and should not be relied upon. We make no guarantees to the correctness of this plan. All interested parties should make and rely on their own enquiries in determining the accuracy of the information contained in this floor plan.