



morton.

Wentworth Point A10003/16 Amalfi Drive

 2  2  1

The quality of its design and the vibrancy of its waterside location ensure this generous two-bedroom apartment's lifestyle appeal is absolutely irresistible. Set within the exclusive One The Waterfront community and capturing an elevated outlook over the building's landscaped grounds and amenities, it offers a very private retreat that is supremely easy-to-maintain and very well-located with all everyday necessities close to the doorstep.

- A well-proportioned open design with excellent natural light
- Sunlit north west facing large terrace with leafy views over parkland
- Smart designer kitchen with an integrated fridge, breakfast island and huge skylight.
- Two bedrooms with built-ins, the main opens onto the balcony
- Lift access to a security basement car space plus storage cage
- Air-conditioning, intercom entry and two designer bathrooms
- Smart home features - smart lights, automated blinds, built-in

View

As advertised or by appointment

Agents

Zarin Hossain

 0418 328 479

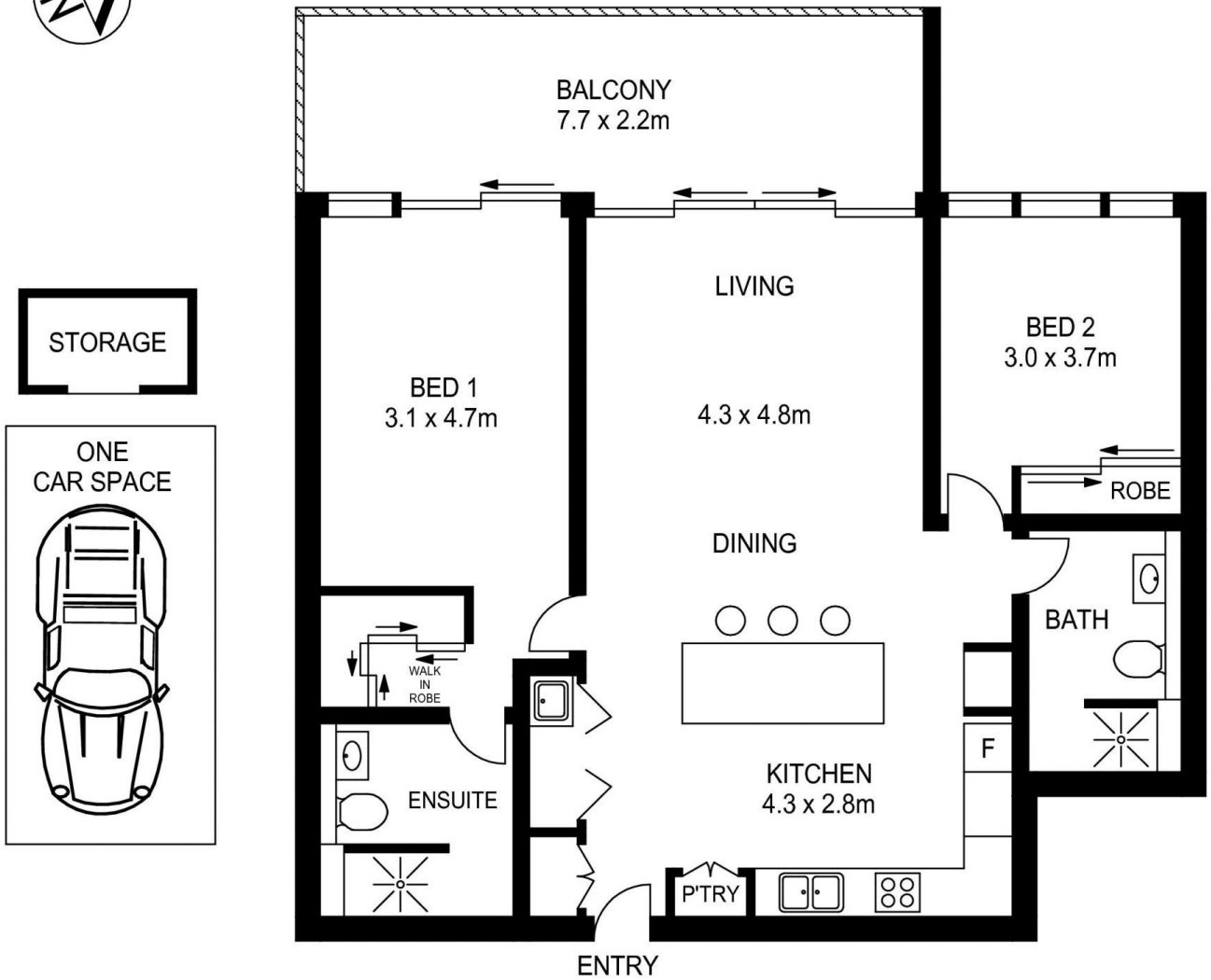
 zarin.hossain@morton.com.au

Nevena Tsahtarlis

 0428 835 910

 nevena@morton.com.au

morton.com.au



A10003/16 AMALFI DRIVE, WENTWORTH POINT



www.assetphotographers.com.au

Please note these measurements are approximate only. The plans is intended as a rough guide for illustrative purpose. It is not warranted or guaranteed to be correct nor it is part of the sale or rental contract