



# morton.

**Ermington** 423/68 River Road

 3  2  2

Generous proportions are always the key to comfort, and this house-sized apartment delivers plenty of space along with a prime location in the heart of Ermington's Royal Shores riverside community. Set in the architectural Seamist complex, it offers the best of both worlds for low-maintenance lifestyle seekers and savvy investors, thanks to its modern design, good security and excellent positioning in the area's fast-emerging lifestyle scene.

- A flowing open design featuring cool timber-look flooring
- Easy level access to an enclosed BBQ balcony/wintergarden
- Three double-sized bedrooms plus a separate study area
- Two security car spaces plus an extra lock-up storage cage
- Well-equipped modern kitchen, ensuite and guest bathroom
- Lift access, air-conditioning throughout and intercom entry
- In a well-maintained security complex with a lush garden foyer

### View

As advertised or by appointment

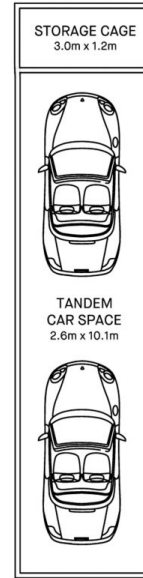
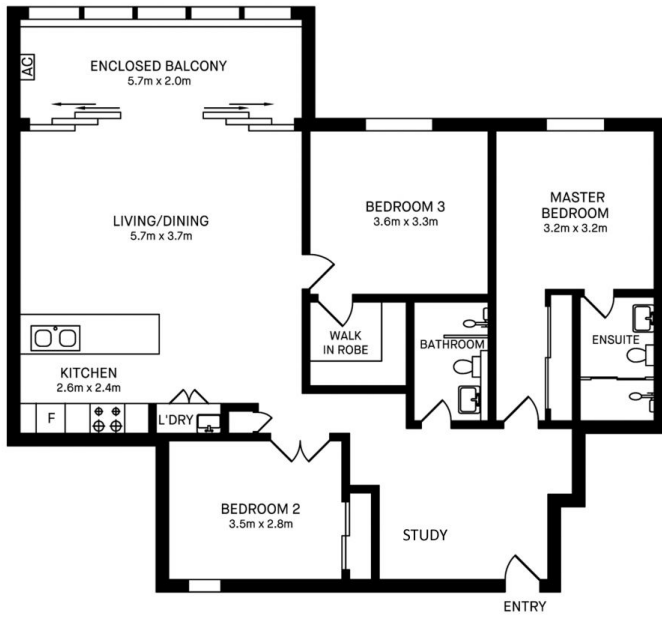
### Agent

**Dylan Choe**

 0416 932 977

 [dylanchoe@morton.com.au](mailto:dylanchoe@morton.com.au)

[morton.com.au](http://morton.com.au)



423/68 RIVER ROAD, ERMINGTON



Please note these measurements are approximate only. The plans is intended as a rough guide for illustrative purpose. It is not warranted or guaranteed to be correct nor it is part of the sale or rental contract.

