



morton.

Woolloomooloo 443/6 Cowper Wharf Roadway

🛏 1 🚿 1

Located on the Eastern side of the sought after level four this large, 61sqm fully furnished one bedroom apartment has flexible living space with plenty of room for living and dining. A desirable feature of this apartment is the floor-to-ceiling windows that occupy the entire Eastern wall and provide a natural flow of light, breeze and outdoor atmosphere.

- Spacious combined lounge/dining area
- Large bedroom with built in robes
- Immaculate bathroom with stone benches
- Kitchen with gas cooktop and dishwasher
- Reverse cycle air conditioning
- Internal laundry
- New carpets, new blinds, freshly painted
- Stunningly styled, brand new furniture
- Pool and gym membership available through Ovolo hotel
- 24 hour on site security

View

As advertised or by appointment

Agents

Reza Nabavi

📞 0419 283 588

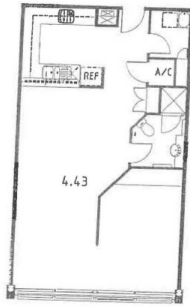
✉ reza.nabavi@morton.com.au

Emma Ryan

📞 0409 325 440

✉ emma.ryan@morton.com.au

morton.com.au



THE
PROMENADE
APARTMENTS

UNIT TYPE. S3
4.43

