



morton.

Glebe 702/2 Cowper Street

 1  1  1

Crafted by acclaimed architects, Chrofi and Kannfinch, the one-bedroom plus study 'Mezzo' apartment is a masterpiece of design, boasting seamless interiors and floor-to-ceiling windows that create an expansive sense of space.

- Separate study/potential second bedroom or home office
- Private, North-East aspect with superb views over Wentworth Park & City skyline
- Sleek kitchen with stone bench tops, gas cooking and dishwasher
- Queen-sized bedroom with built-in robes and access to balcony
- Spacious combined living and dining area
- Modern bathroom with separate internal laundry
- Ducted Air conditioning, secure parking with storage
- Rooftop garden with panoramic views of the Harbour and City

Auction

Tuesday, 23 Jul 2024, 6:00 pm

View

As advertised or by appointment

Agents

Ian Qiu

 0447 696 425

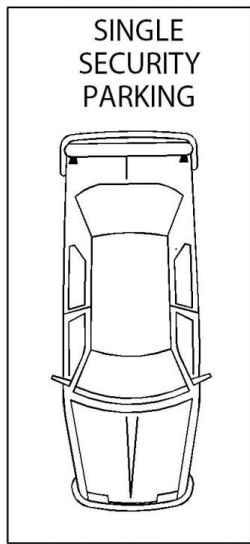
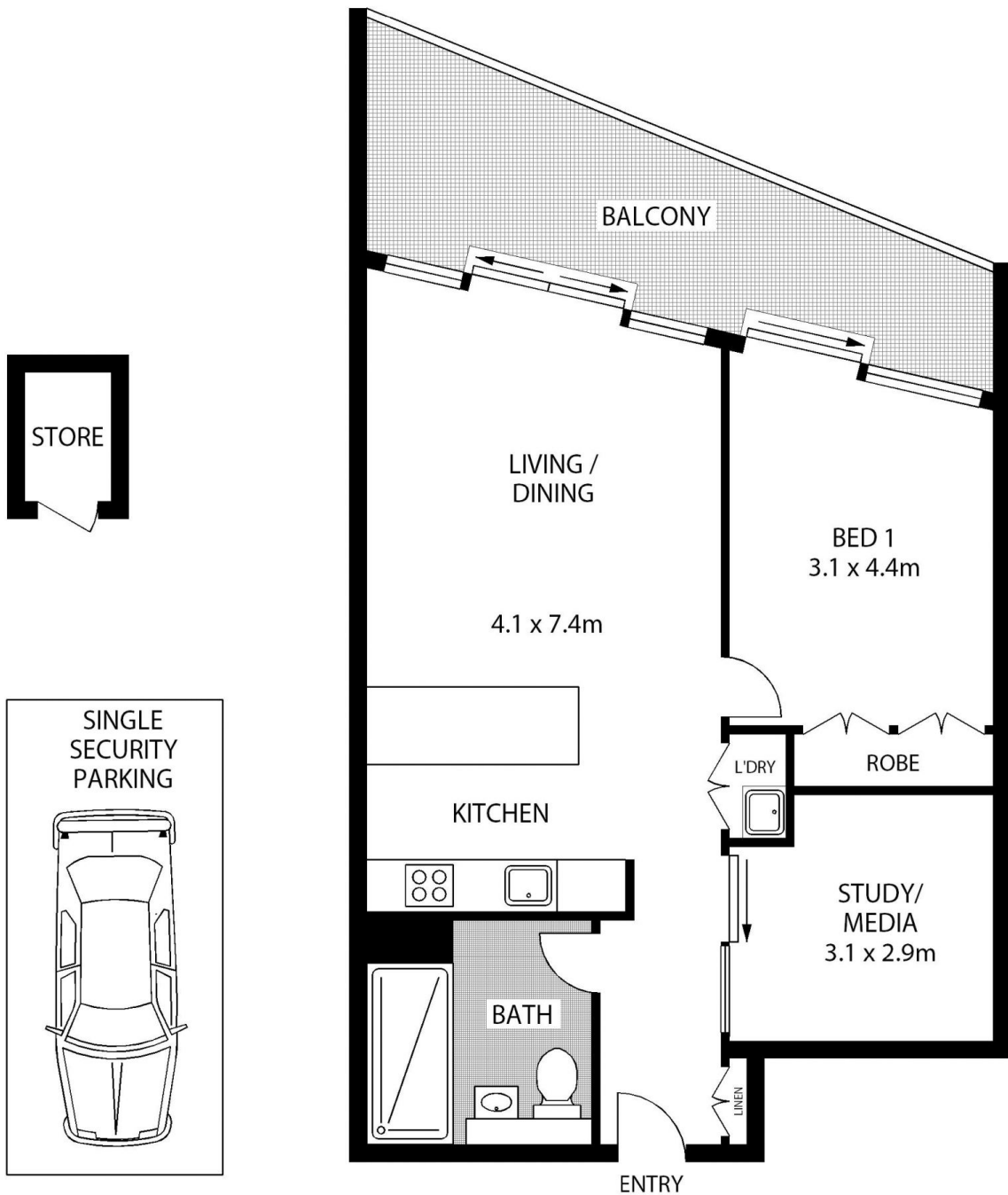
 ian@morton.com.au

Naomie Texier

 0439 247 710

 naomie@morton.com.au

morton.com.au



LEVEL 7



702/2 COWPER STREET

GLEBE

SCAPE Floor Planning Disclaimer: This floor plan is conceptual only. It is provided for illustrative purposes only and should not be relied upon. We make no guarantee as to the correctness of this plan. All interested parties should make and rely on their own enquiries in determining the accuracy of the information contained in this floor plan.