



morton.

Waterloo 2005/21 Dunkerley Place

 3  2  1

Welcome to Triple S Property! This gorgeous apartment located in Waterloo, Waterfall by Crown Group sits just 4km from the Sydney CBD with convenient public transport connections to the city, airport, and eastern suburbs. Centennial Park, East Village Shopping Centre, and Green Square train station are just a short walk away. Inspired by cascading water and tropical rainforests, Waterfall by Crown Group offers a green revolution in sophisticated urban resort-style living.

- Panoramic city view from the balcony
- Spacious living combine dining area and luxury quality finishes
- Gourmet kitchen with stone bench tops and Miele appliances

- Generous bedrooms with built in robes
- Fridge, washer and dryer included
- Luxury bathrooms with frameless glass showers
- Australia's tallest man-made waterfall
- Rooftop infinity pool with views of Sydney CBD

morton.com.au

View

As advertised or by appointment

Agents

Christina Tsousta

 0408 577 427

 christina.tsousta@morton.com.au

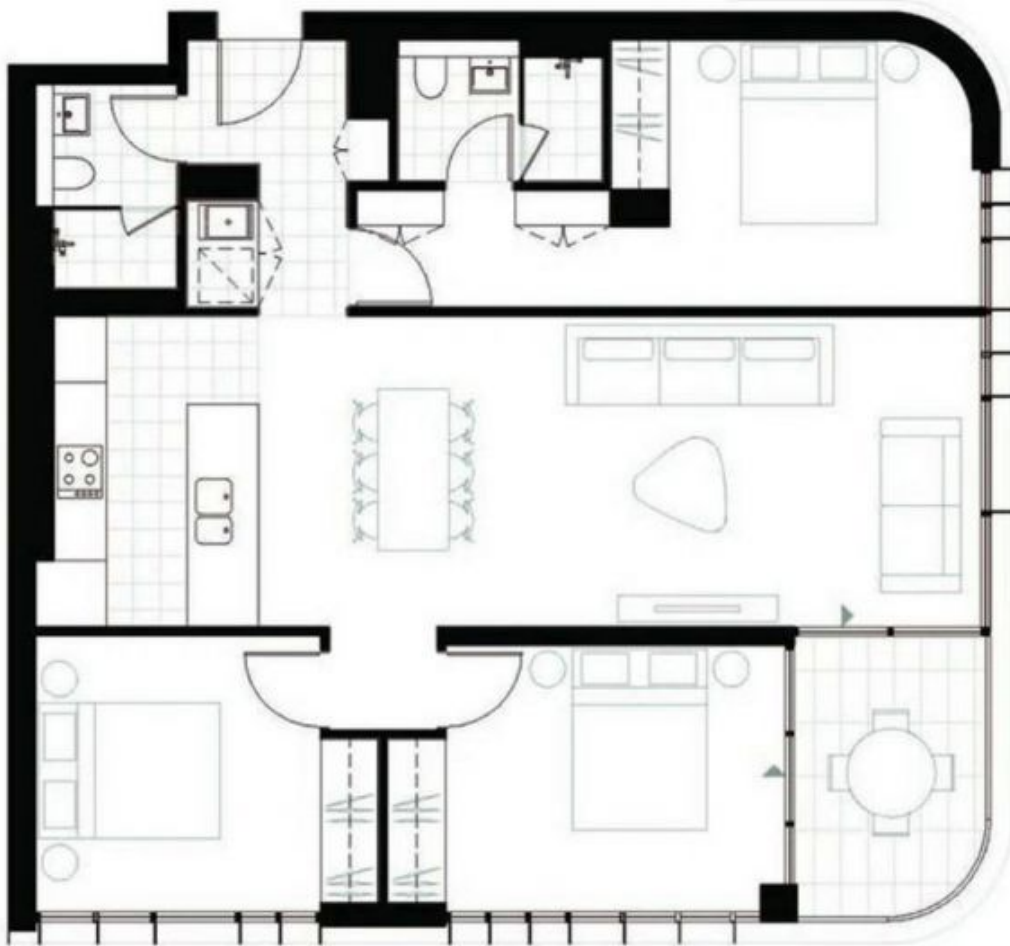
Reza Nabavi

 0419 283 588

 reza.nabavi@morton.com.au

Three Bedroom

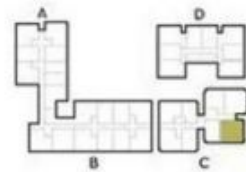
Waterfall by Crown Group | 15-20 O'Dea Avenue, Waterloo



BUILDING C

Apartments: C205, C305, C505, C605, C705, C805, C905, C1005, C1105, C1205, C1305, C1505, C1605, C1705, C1805, C1905, C2005, C2105

Total	99sqm
Internal	93sqm
External	6sqm



1:100 Scale