



**morton.**

**Wentworth Point** H11132/19 Amalfi Drive

 2  2  1

Experience a superb spacious lifestyle in the highly sought-after One The Waterfront complex with this impeccably finished apartment. This impressive home offers the perfect sanctuary for those who demand convenience and a sophisticated entertainer's retreat with generous proportions, a light-filled layout, and sweeping panoramas that stretch over the Wentworth Point community and beyond.



- A flowing single-level floorplan provides excellent crossflow of air, ensuring a fresh and comfortable living environment.
- Spacious open floor plan.
- Seamless transition to a large, sunlit entertainment terrace perfect for hosting gatherings or simply relaxing.
- An elevated north-east aspect guarantees all-day natural light.
- Contemporary kitchen equipped with integrated Bosch appliances.
- Two well-proportioned bedrooms with direct access to the balcony.
- Lift access from a secure car space and a lock-up storage

#### **View**



As advertised or by appointment

#### **Agents**

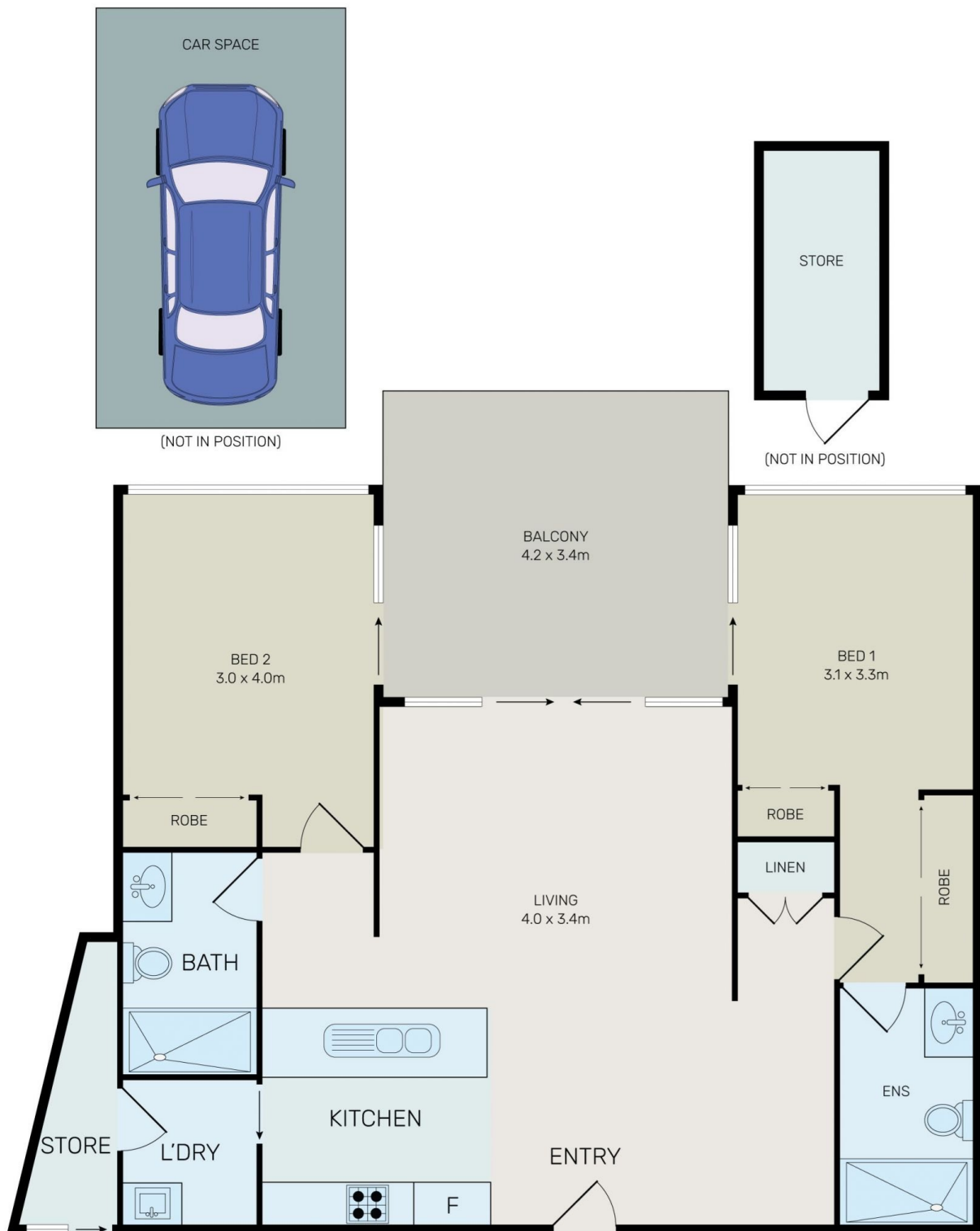
##### **Vivian Zhang**

 0447 964 200  
 vivian@morton.com.au

##### **Dylan Choe**

 0416 932 977  
 dylanchoe@morton.com.au

**morton.com.au**



All information contained herein is gathered from all sources we believe to be reliable. However

# H11132/19 Amalfi Drive, Wentworth Point