



morton.

Wentworth Point 205/8 Nuvolari Place

 1  1  1

The Waterfront is located moments to Sydney Olympic Park main venues, train station, Bicentennial Park and Millennium Parklands. Located in Alora, this is your opportunity to move into this one bedroom apartment only a short stroll from The Promenade and The Piazza.

- Combined living and dining room
- Reverse cycle air conditioning
- Open kitchen with stainless steel appliances
- Gas cooking and lots of cupboard space
- Great size bedroom with huge built-in wardrobes
- Laundry room and clothes dryer
- Secure undercover car space and storage cage

View

As advertised or by appointment


Agents

Zarin Hossain

 0418 328 479

 zarin.hossain@morton.com.au

Nevena Tsahtarlis

 0428 835 910

 nevena@morton.com.au

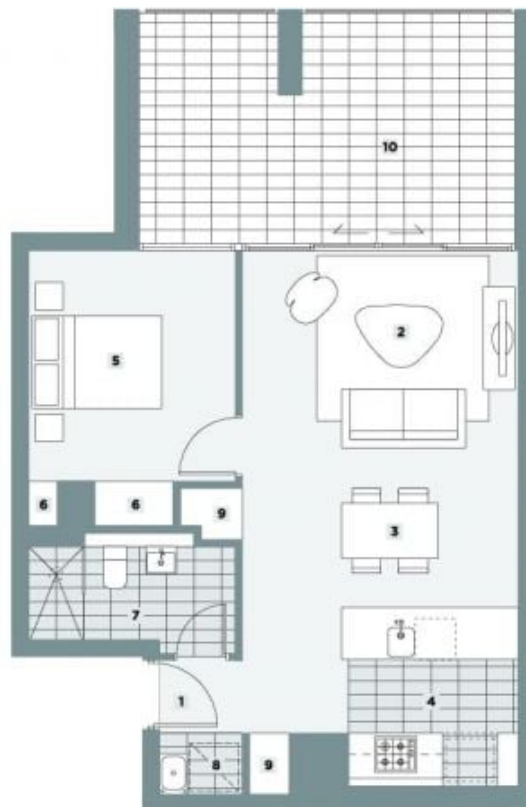
morton.com.au



ALORA
THE WATERFRONT

APARTMENT C.2.05
1 bedroom

Internal Area 52 sqm
External Area 18 sqm
Total Area 70 sqm



LEVEL 2



KEY

- 1 Entry
- 2 Living
- 3 Dining
- 4 Kitchen
- 5 Bedroom
- 6 Wardrobe
- 7 Bathroom
- 8 Laundry
- 9 Store
- 10 Balcony/Courtyard



Scale 1:100
0m 1m 2m

REV F



THE WATERFRONT
WENTWORTH POINT



Disclaimer: The particulars are set out as a general outline for the guidance of intending purchasers and do not constitute an offer or contract. All descriptions, dimensions, references to conditions and necessary permutations for use and other details are given in good faith and are believed to be correct, but any intending purchasers should not rely on them as statements or representations of fact, but must satisfy themselves by inspection or otherwise to the correctness of each item, and where necessary seek advice. No third party supplier or their agents has any authority to make or give any representations or warranty in relation to this property. *External areas may be larger for courtyard apartments. Refer to the detailed area schedule.