



morton.

Sydney Olympic Park 20308/2B Figtree Drive

🛏 2 🚗 2 🚗 1

With an emphasis on cutting edge design and high-quality finishes, this stunning residence by developers Mirvac is the perfect abode for a family or professional couple. With a generously proportioned open plan layout, the floor to ceiling glass sliding doors help flood the apartment with natural light. Enjoy the modern finishes and sense of privacy offered by this stylishly presented home.

- Well-appointed living and dining area, with access to balcony
- Modern kitchen with stone benchtops and built-in Miele appliances
- Double bedrooms with built-ins, and a master with ensuite
- Ducted A/C, full secure & quality building by Mirvac
- Separate storage cage, secure parking space
- Resident access to gym, BBQ, community room and garden
- Bright and inviting interiors with plenty of natural light
- Views of Figtree with leafy outlook from a good size balcony

View

As advertised or by appointment

Agents

Zarin Hossain

📞 0418 328 479

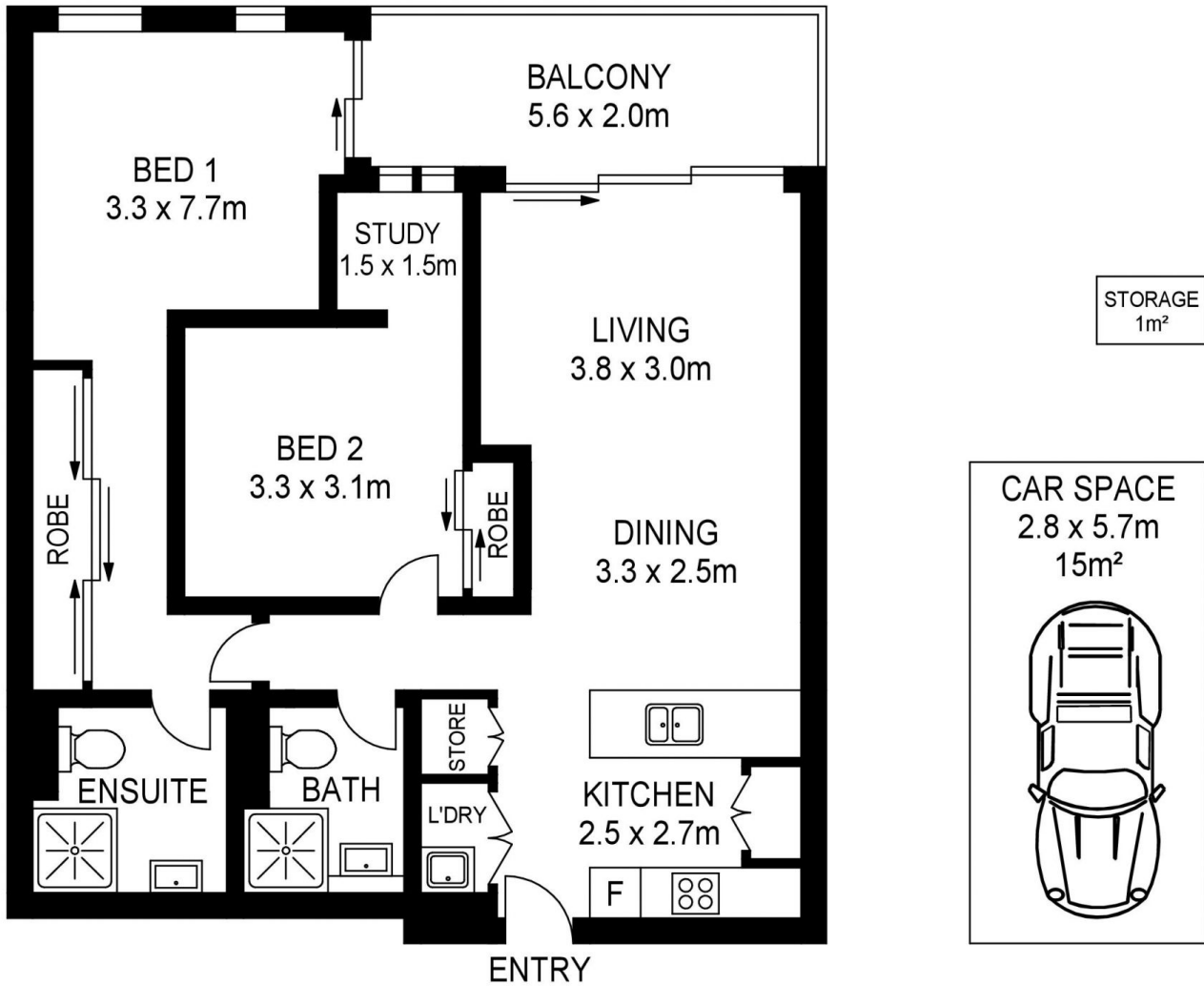
✉ zarin.hossain@morton.com.au

Nevena Tsahtarlis

📞 0428 835 910

✉ nevena@morton.com.au

morton.com.au



20308/2B FIGTREE DRIVE, SYDNEY OLYMPIC PARK



www.assetphotographers.com.au

Please note these measurements are approximate only. The plans is intended as a rough guide for illustrative purpose. It is not warranted or guaranteed to be correct nor it is part of the sale or rental contract

