



morton.

Woolloomooloo 415/6 Cowper Wharf Roadway

 3  2  2

Set within the iconic Finger Wharf this spacious city facing three bedroom apartment showcases sweeping harbour, city skyline and marina vistas. The apartment is nestled in one of Sydney's most sought-after communities and offers its residents a beautiful place to live.

- City views from living room & bedrooms
- Generously proportioned living and dining takes advantage of the spectacular outlook
- Master bedroom with walk-in robe
- Large balcony and floor to ceiling glass windows flood the apartment with natural light throughout
- Ducted reverse cycle air conditioning
- Internal laundry
- Two secure onsite car spaces
- Marina berth
- Onsite 24hr security

View

As advertised or by appointment

Agents

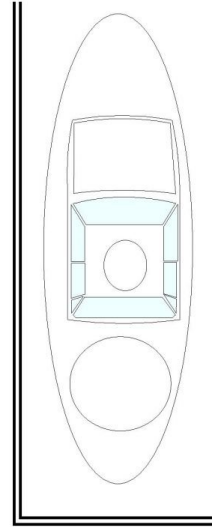
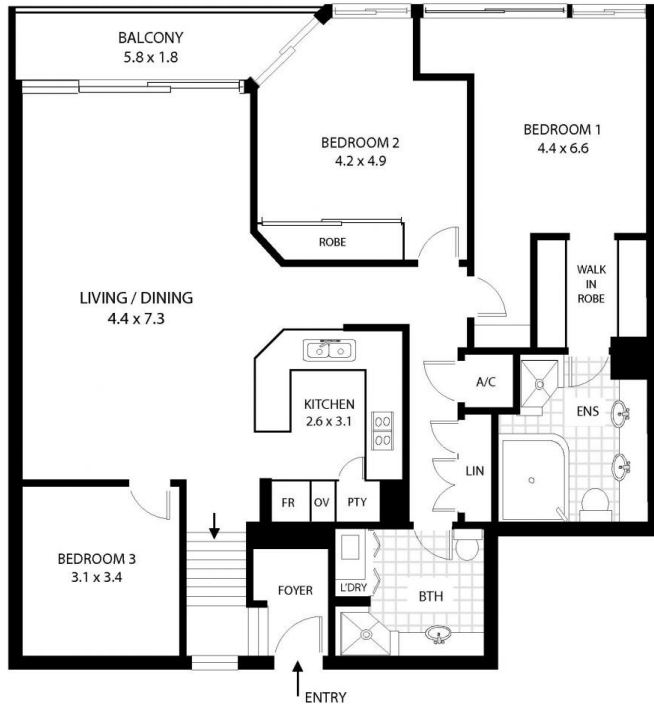
Noel Jenkins

 0410 593 694
 noel@morton.com.au

Christian Postiglione

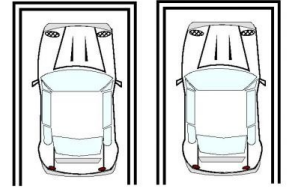
 0400 074 525
 christian.postiglione@morton.com.au

morton.com.au



BOAT BERTH

2 x SECURE CAR SPACES



415/6 Cowper Wharf Rd, Woolloomooloo

All measurements are approximate only. Plan is provided as an indication of layout

