



morton.

Sydney 312/35 Shelley Street



Nestled in a prestigious harborside enclave, this welcoming apartment combines convenient city access with captivating surroundings. This well-configured 67-square-metre space radiates warmth and style, while the natural light from the eastern aspect bathes the home in a serene glow.

- Spacious balcony ideal for entertaining and BBQ
- Generous double bedroom with built-in wardrobe
- Open plan lounge/dining with easy balcony access
- Sleek gas kitchen featuring Caesarstone countertops
- Contemporary bathroom with European laundry
- 4sqm additional storage cage, central air conditioning
- Amenities include a heated pool, gym, BBQ, sauna, concierge
- Walking distance to Wynyard, ferries, theatres, parks

View

As advertised or by appointment

Agents

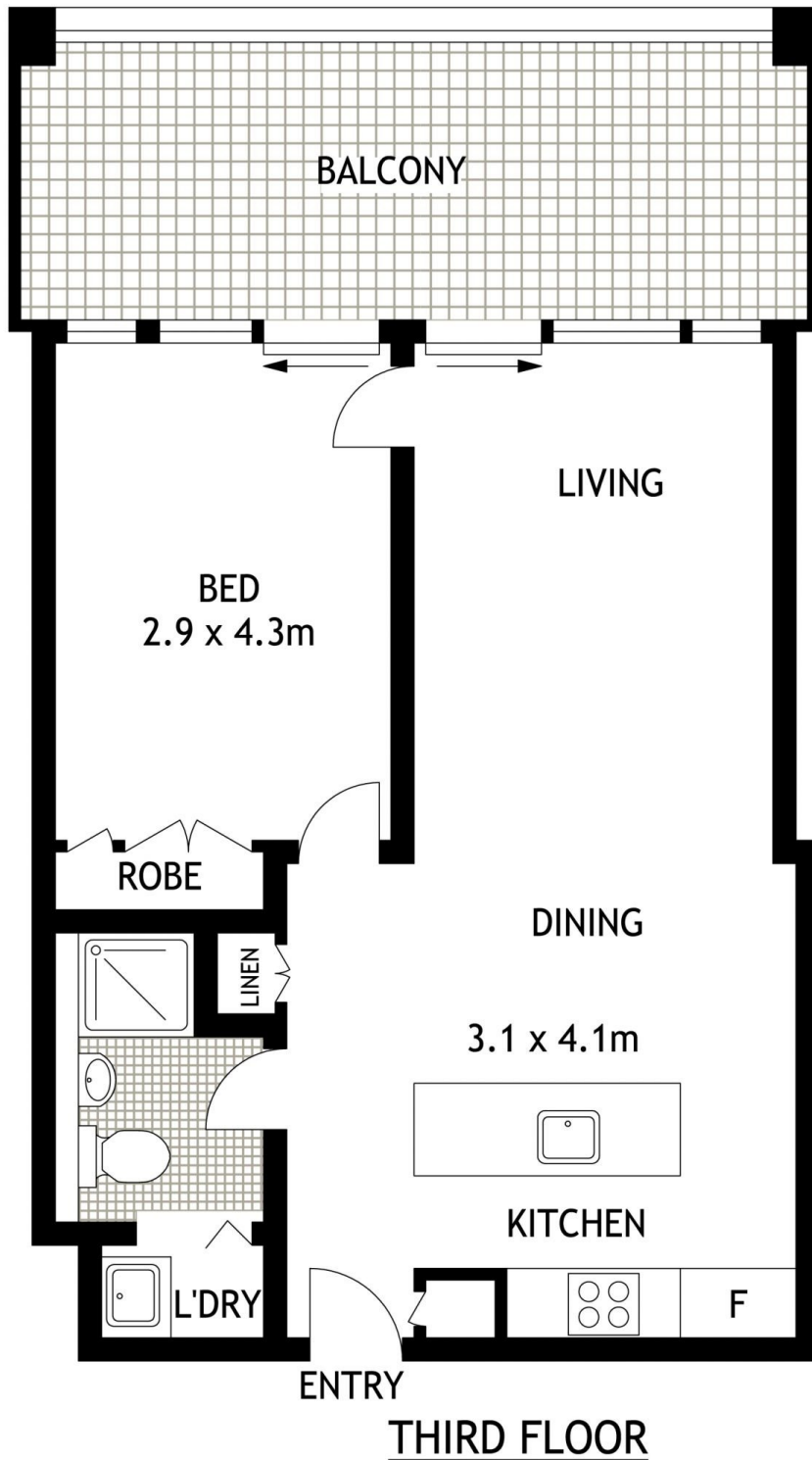
Ettiene West

📞 0410 593 749
✉ ettiene@morton.com.au

Arman Zounuzy

📞 0410 539 793
✉ arman.zounuzy@morton.com.au

morton.com.au



312/35 SHELLEY STREET

SYDNEY

SCAPE Floor Planing Disclaimer: This floor plan is conceptual only. it is provided for illustrative purposes only and should not be relied upon. We make no guarantees to the correctness of this plan. All interested parties should make and rely on their own enquiries in determining the accuracy of the information contained in this floor plan.