



# morton.

**Pyrmont** 22/56 Pirrama Road

 3  2  2

Impeccably crafted with an unsurpassed attention to detail and a stylish artistic aesthetic, this exquisite residence defines sophisticated waterfront living. In an ultra exclusive, end-of-peninsula setting, this beautiful contemporary offering opens to embrace uninterrupted harbour and private marina views.

- Exclusively positioned literally on the water's edge
- Intuitively designed with an emphasis on level luxury living
- Deep balcony set against a superb harbour & park side backdrop
- Optimum level 3. Privacy, security and an "on the harbour" viewpoint
- High end "Miele" kitchen wrapped in marble, stainless & hardwood
- Palatial master retreat, travertine ensuite, heated floors & towel rails
- All bedrooms offer space, views and custom built-in wardrobes
- Bespoke Blackbutt parquetry timber floors, air conditioning

### Auction

Saturday, 06 Jul 2024, 1:30 pm

### View

As advertised or by appointment

### Agents

#### James Crow

 0410 593 057

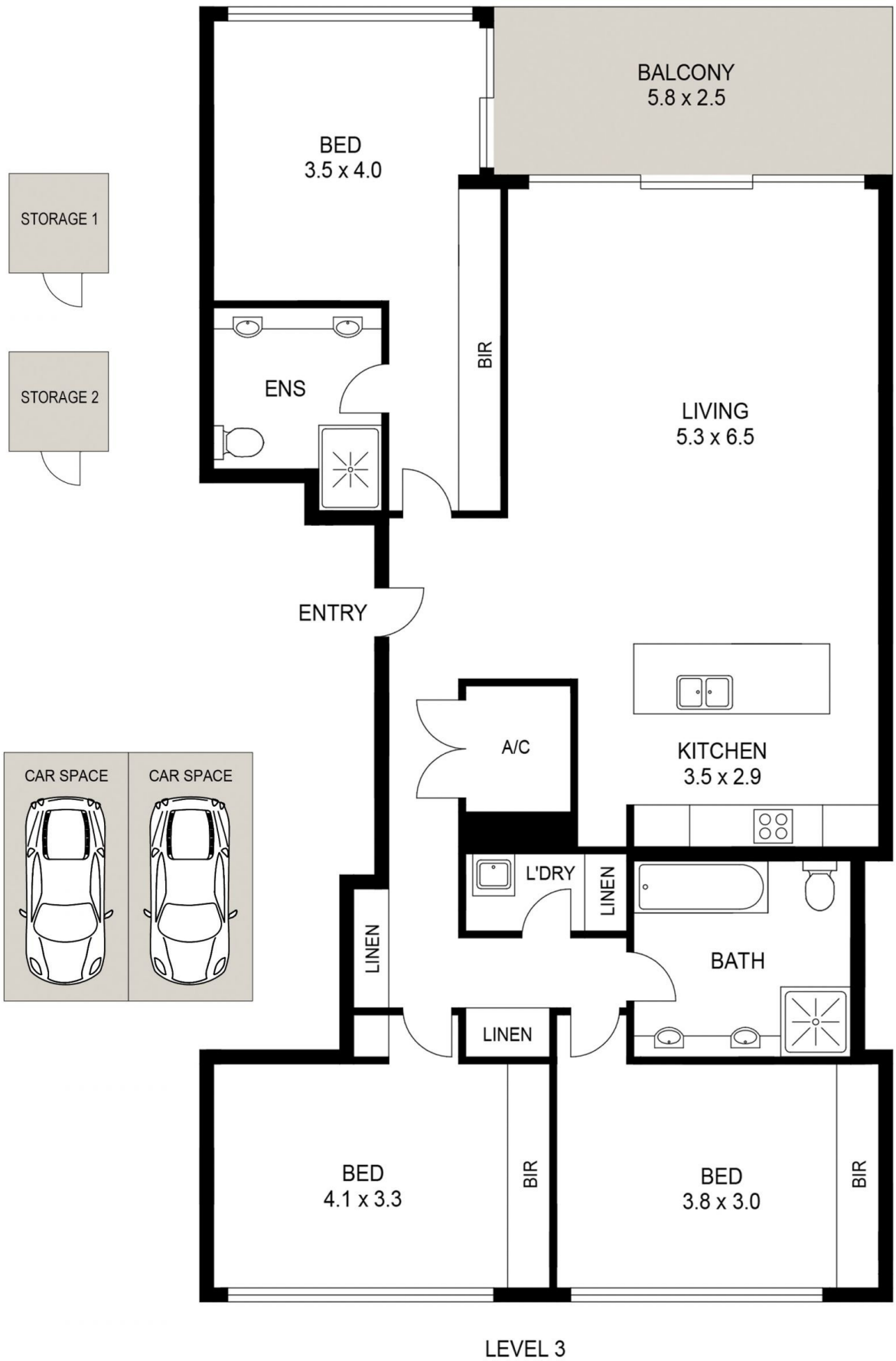
 james@morton.com.au

#### Brooklyn Clark

 0410 593 248

 brooklyn.clark@morton.com.au

[morton.com.au](https://morton.com.au)



PLANS SHOWN ONLY INDICATIVE OF LAYOUT. DIMENSIONS ARE APPROXIMATE.

