



morton.

Pyrmont 8/1 Murray Street

 3  2  2

View

As advertised or by appointment

Agent

Cesar Rojas Soto

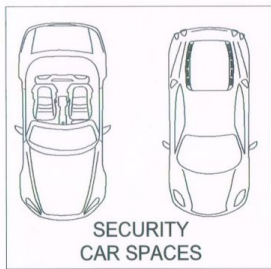
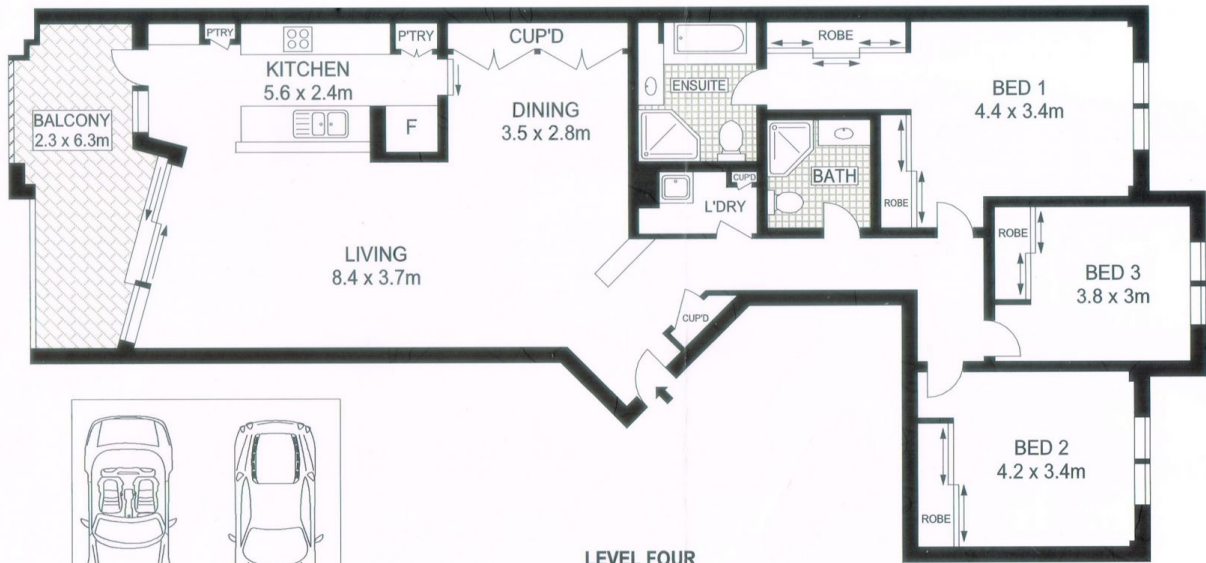
 0407 547 996

 cesar.rojas-soto@morton.com.au

Single level luxury defines this superb residence where style, space and mesmerising views combine to create a stunning lifestyle apartment. Set in Mirvac's prestige Gateway complex, it offers a home of outstanding quality with spacious proportions and breath-taking harbour and city panoramas. This deluxe property showcases a flowing light-filled layout and enjoys a premier location on the doorstep of Darling Harbour, Star Casino, Barangaroo and Sydney's CBD.

- Prime north facing position with inspiring harbour and city views
- An expansive layout with over 145 sqm indoor/outdoor living space
- Large glass sliding doors that maximise natural light and city views
- A seamless integration with a wide terrace for entertaining
- Three double bedrooms, master with full bath ensuite and dressing, all with built in robes
- Further second bathroom with shower
- Sleek kitchen, stainless appliances, sunny breakfast area

morton.com.au



BASEMENT

LEVEL FOUR



Scale in metres. Indicative only. Dimensions are approximate. All information contained herein is gathered from sources we believe to be reliable. However we cannot guarantee its accuracy and interested persons should rely on their own enquiries.



8/1 Murray Street, Pyrmont