



morton.

Pyrmont 401/25 Refinery Drive

 2  2  1

This prestigious apartment invites you to step into a world of tranquillity. As you open the door, the spectacular views of the Anzac Bridge and harbour unfold before you. Nestled in one of Pyrmont's most desirable and peaceful streets, this corner-situated apartment is intuitively configured to maximise the flow of space and light.

- Developed by Lend Lease, designed by award-winning architect, Tony Caro
- A boutique building of only 20 apartments
- Recently re-painted with upgraded light fittings throughout
- Bathed in the natural light of a north-western aspect
- Impressive open living for indoor/outdoor entertaining
- Spacious master with an ensuite and mirrored walk-in
- Sleek CaesarStone Smeg gas kitchen
- Large balcony, air con and concealed laundry
- Video intercom, lift-access and storage cage

Auction

Tuesday, 02 Jul 2024, 6:00 pm

View

As advertised or by appointment


Agents

Ian Qiu

 0447 696 425

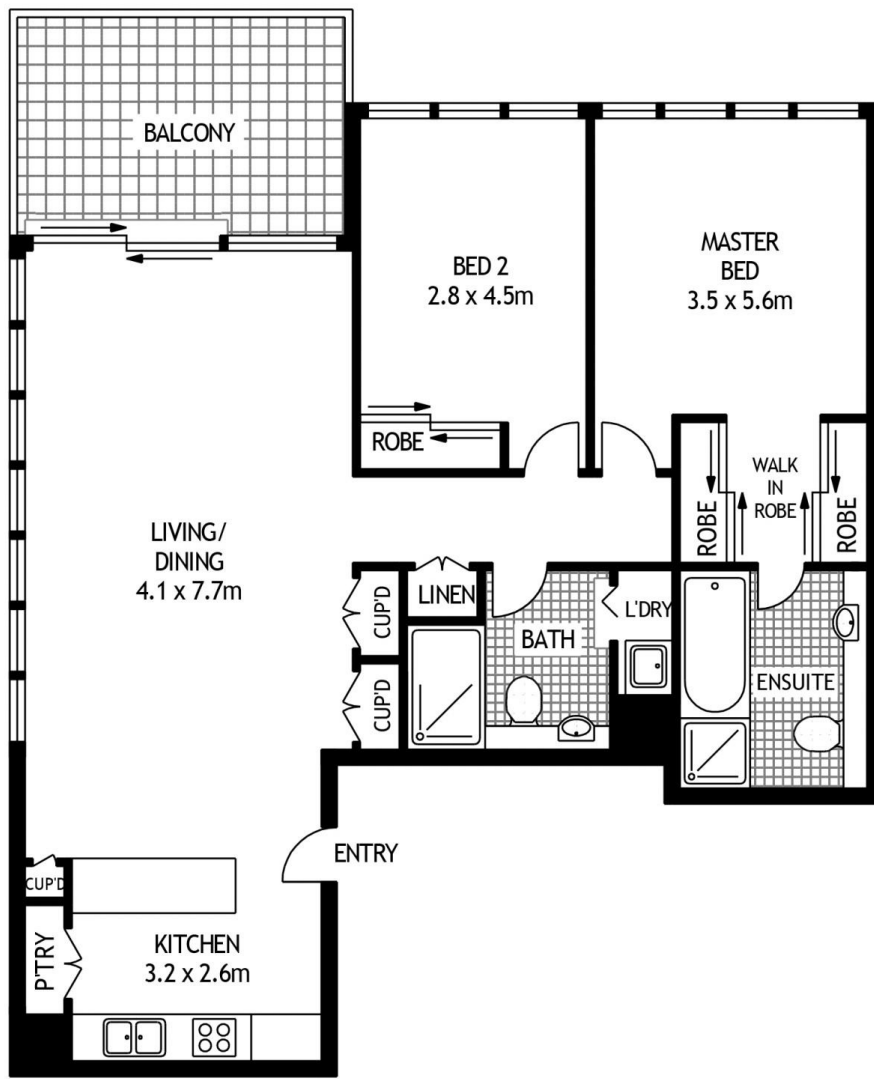
 ian@morton.com.au

Naomie Texier

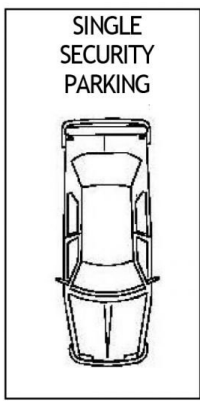
 0439 247 710

 naomie@morton.com.au

morton.com.au



FOURTH FLOOR



401/25 REFINERY DRIVE

PRYMONT

SCAPE Floor Planning Disclaimer: This floor plan is conceptual only. it is provided for illustrative purposes only and should not be relied upon. We make no guarantees to the correctness of this plan. All interested parties should make and rely on their own enquiries in determining the accuracy of the information contained in this floor plan.