



morton.

Pyrmont 601/24 Refinery Drive

🛏 2 🚿 2 🚗 1

Living in Jacksons Landing is at its finest when you are located right on the waterfront and commanding elevated views across Jones Bay to the Anzac Bridge. This designer home combines this with smart stylish interiors, a light-filled layout and many quality design features to deliver an excellent low-maintenance home in the highly regarded 'Bridgeview' complex.

- An absolute waterfront location with stunning, unobstructed views of Anzac Bridge, park and the treelined Refinery Drive.
- Sweeping water views are captured from all major rooms.
- A sought-after corner position allows for abundant natural light from two sides.
- Generous open plan design with a great crossflow of air.
- Two bedrooms set at opposite ends of the floorplan.
- A peaceful location in a relatively small building with only one neighbour per floor.
- A sunlit balcony makes a great entertainment space.
- Quality island kitchen fitted with sleek gas appliances.
- Full bath ensuite, guest bathroom and internal laundry.

View

As advertised or by appointment

Agents

Cesar Rojas Soto

📞 0407 547 996

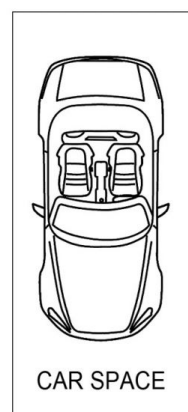
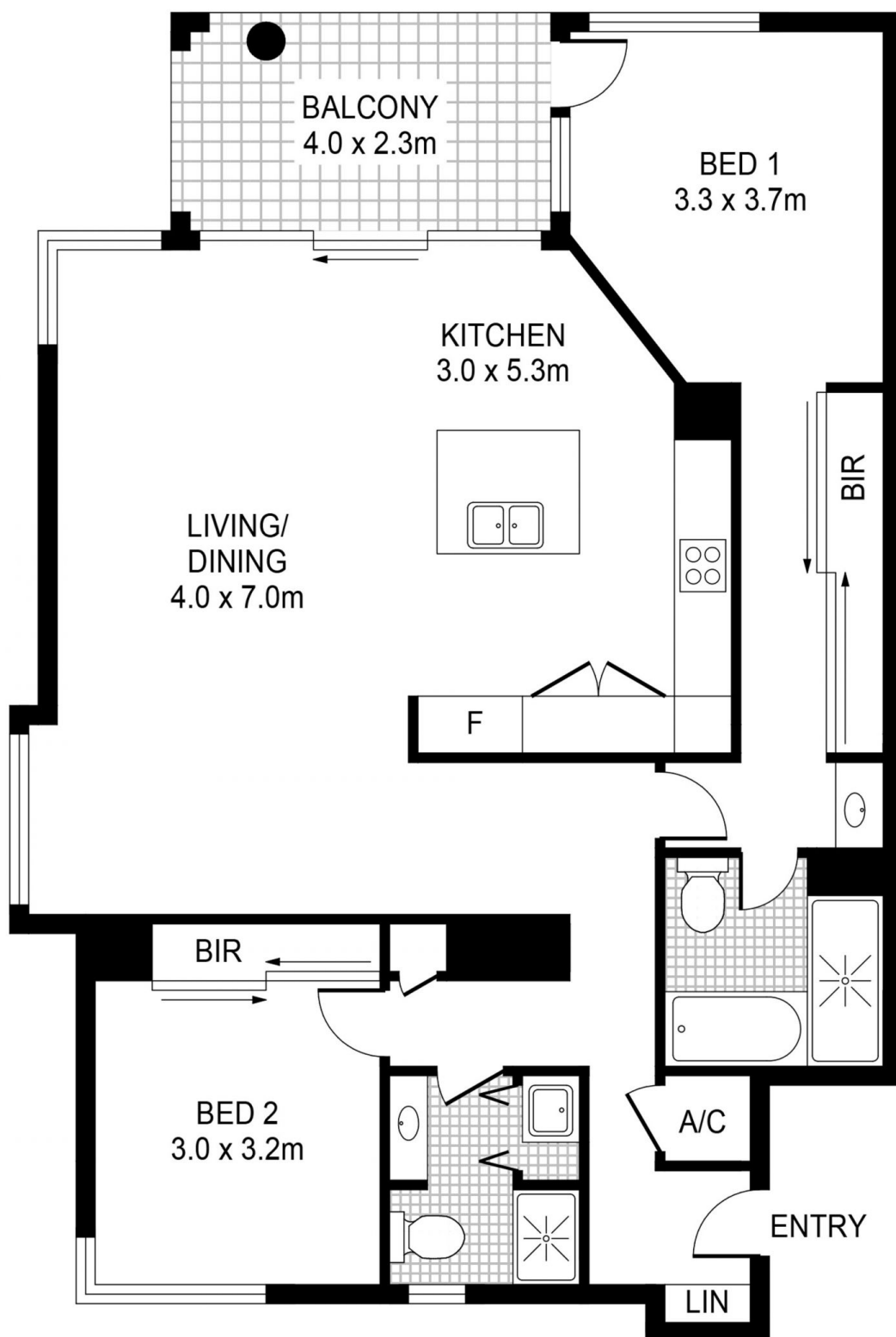
✉ cesar.rojas-soto@morton.com.au

Naomie Texier

📞 0439 247 710

✉ naomie@morton.com.au

morton.com.au



STORAGE

PLANS SHOWN ONLY INDICATIVE OF LAYOUT. DIMENSIONS ARE APPROXIMATE.



PYRMONT 24 Refinery Dr

morton.